

# Your Data Say What?

## Understanding and Sharing Outcome Data



**Samantha Florey**

FRIENDS National  
Center for CBCAP



**Kristen Kirkland**

NYS Office of Children  
and Family Services

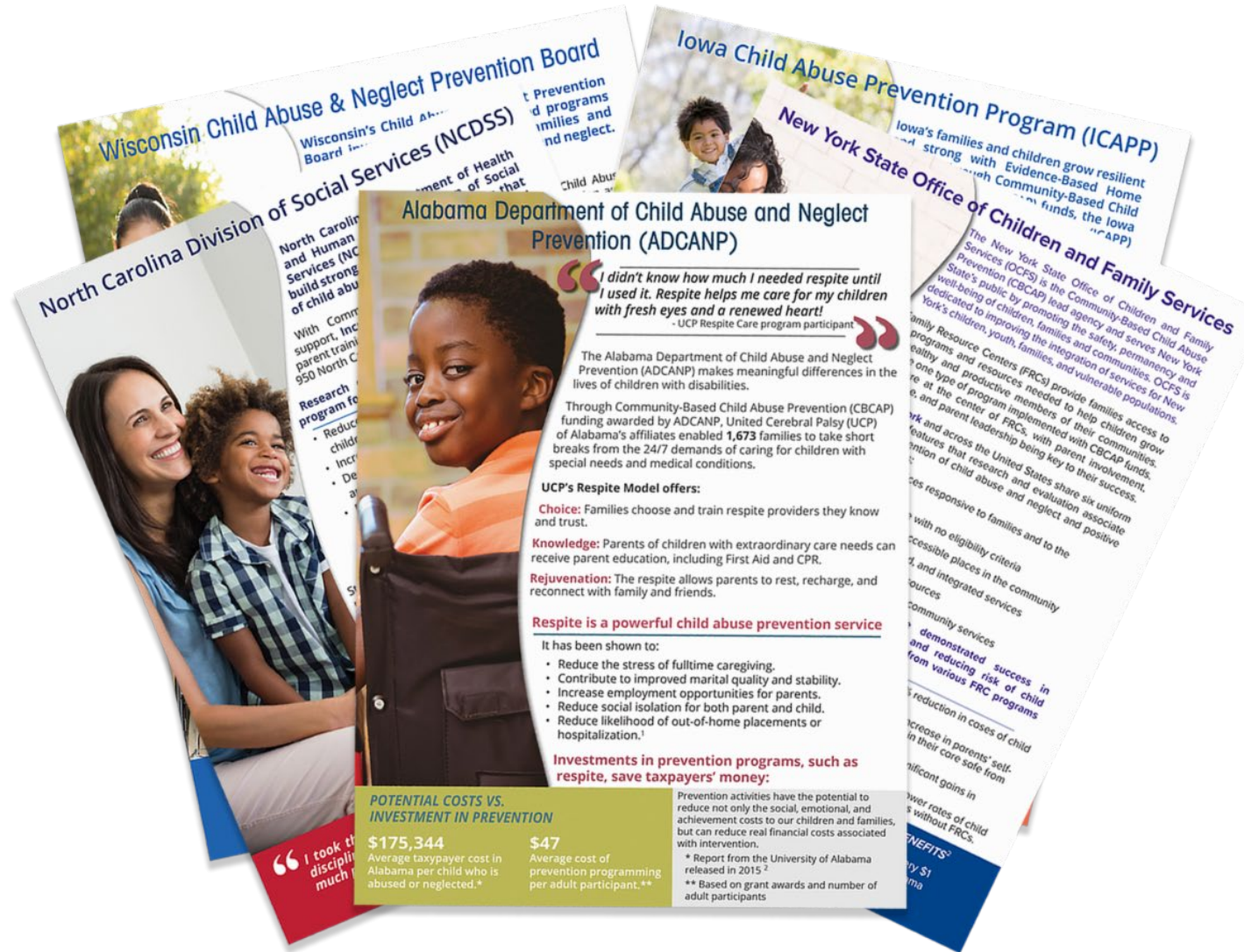


**Casandra Firman**

FRIENDS National  
Center for CBCAP



# FRIENDS Evaluation Brief Project: *Sharing Data*





# Know

No ☐ C. Not Sure ☐ E.  
Yes ☐ D. No, referred to Differential Response ☐ F.

Identify the type of program that most accurately describes the services the participant received. (Select all that apply)

Advocacy (self, community) ☐ Parent Education ☐  
Healthy Relationships ☐ F. Parent/Child Interaction ☐  
Home Visiting ☐ G. Parent Support Group ☐  
Homeless/Transitional Housing ☐ H. Planned and/or Crisis Respite ☐

Participant's Attendance:  
at Pre-test: \_\_\_\_\_ at Post-test: \_\_\_\_\_  
Number of hours of service offered to the participant \_\_\_\_\_ Number of hours of service received by the participant \_\_\_\_\_

Please remove this form prior to giving the survey to the participant.

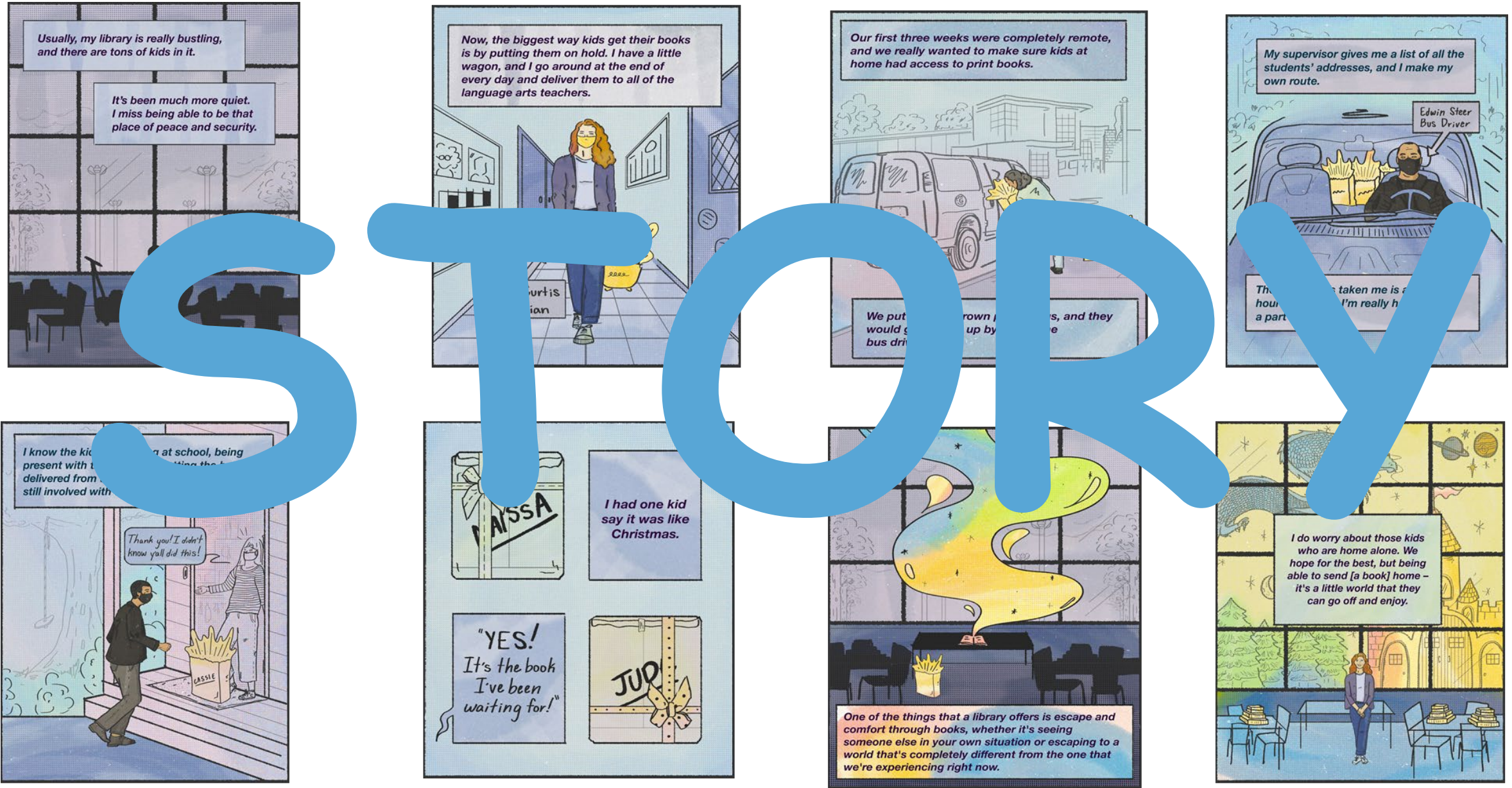
Developed by the FRIENDS National Center for Community-Based Child Abuse Prevention, Inc. for Public Partnerships and Research through funding provided by the US Department of Justice.



7	6	4	7	7	6	7	6	5	6	7
7	7	7	7	7	7	7	7	7	7	7
6	6	5	7	5	6	5	6	4	4	5
7	6	4	6	5	7	6	7	3	5	4
5	5	5	7	5	6	4	5	3	4	4
6	7	4	6	5	7	6	7			
7	7	7	7	7	7	7	7	7	7	7
7	6	5	7	5	6	4	5			
5	6	4	6	6	7	8	7			
6	7	3	4	5	5	6	5	6	5	5
4	6	5	6	6	6	5	6	4	5	5
5	7	5	6	6	6	5	6	4	5	5
5	6	4	5	5	5	4	5	3	4	4
7	7	7	7	7	7	7	7			
7	5	6	6	7	6	5	6	5		4
6	7	5	6	7	5	4	6	6	7	4
4	6	3	6	3	5	4	7		4	6
3	6	5	7	6	6	7	6	5	7	5
4	7	3	6	5	5	6	6	2	4	
2	6	5	6	3	5	7	6	6	7	
2	7	3	6	5	5	7	7	4	5	5
1	4	5	7	4	6	6	6	5	7	5
3	5	3	6	4	5	5	6	2	4	3
4	6	5	7	4	6	5	6	5	7	3
5	7	3	6	6	5	36	2	4	4	7
4	6	5	7	6	6	5	6	4	6	5







# Sharing Data in Meaningful and Creative Ways

- ❖ **Make it Meaningful:** decide on specific outcome data that will best illustrate your work and positive impact. Perhaps focus on a particular area or capture important themes.
- ❖ **Get Creative:** show how program has made an impact in a way that families, parents, community members, stakeholders and funders understand and connect with.
- ❖ **Show AND Tell:** Tell the story with pictures and charts and graphs. Showcase qualitative findings – include quotes from participants whenever possible.





# Sharing Data in Meaningful and Creative Ways:

## *Benefits of a Visual Document*

- ❖ Communicates information quickly and easily
- ❖ People reading the document may not read all (or any) text but can get information from the visual aspects
- ❖ Makes data more understandable
- ❖ Allows the participant voice to be heard
- ❖ Helps results come to life!



# CQI – Continuous Quality Improvement



A CQI Environment is one in which data are collected and used to make positive changes.



# What Story Does Your Data Tell?

How did we get from this...

...to this?

	A	B	C	D	E	F	G	H	I	J
1	HHwParents	HHSingleParent	HHNoncustodia	HealthInsuranceSe	HealthInsuranceChil	DisabilitiesSelf	DisabilitiesChil	EduLevel	AnnualIncome	PeopleInHou
2	0	0	0	1	1	2	2	3	99	4
3	0	0	0	1	1	2	2	3	99	4
4	0	0	0	1	1	2	2	3	99	4
5	NULL	NULL	NULL	1	1	2	2	3	99	4
6	0	0	0	1	1	2	2	3	99	4
7	0	0	0	1	1	2	2	3	99	4
8	NULL	NULL	NULL	1	1	2	2	3	99	4
9	0	0	0	1	1	2	2	3	99	4
10	0	0	0	1	1	2	2	3	99	4
11	0	0	0	1	1	2	2	3	99	4
12	0	0	0	1	1	2	2	3	99	4
13	0	0	0	1	1	2	2	3	99	4
14	0	0	0	1	1	2	2	3	99	4
15	0	0	0	1	1	2	2	3	99	4
16	0	0	0	1	1	2	2	3	99	4
17	0	0	0	1	1	2	2	3	99	4
18	0	0	0	1	1	2	2	3	99	4
19	0	0	0	1	1	2	2	3	99	4
20	NULL	NULL	NULL	1	1	2	2	3	99	4
21	0	0	0	1	1	2	2	3	99	4
22	0	0	0	1	1	2	2	3	99	4
23	0	0	0	1	1	2	2	3	99	4
24	0	0	0	1	1	2	2	3	99	4
25	0	0	0	1	1	2	2	3	99	4
26	0	0	0	1	1	2	2	3	99	4
27	0	0	0	1	1	2	2	3	99	4
28	0	0	0	1	1	2	2	3	99	4
29	0	0	0	1	1	2	2	3	99	4
30	0	0	0	1	1	2	2	3	99	4
31	0	0	0	1	1	2	2	3	99	4
32	0	0	0	1	1	2	2	3	99	4
33	0	0	0	1	1	2	2	3	99	4
34	*data are fake for presentation									
35										

## Family Resource Centers in New York Make a Difference

*"This program gave me the tools and knowledge to teach discipline, and the work I put in shows in my children's growth, behavior and development."*  
- FRC Participant

Research has shown that building on five protective factors with families reduces child abuse and neglect, and also increases family stability and enhances child development.<sup>3</sup> The five protective factors are: parental resilience, social connections, concrete support in times of need, knowledge of parenting and child development, and social emotional competence. Evaluations of eight FRCs in New York have found that families using FRC services show improvement in these protective factors.

Data from New York's Protective Factors Instrument (PFI) shows that those at the highest risk<sup>4</sup> of child abuse and neglect are getting the most benefit from FRCs in New York State. FRCs are helping these high risk parents improve their Parental Resilience, Social Connections, Concrete Supports, and Nurturing and Attachment.\*



Average PFI scores across ALL FRC participants showed a **12% increase in Parental Resilience** after receiving FRC services. Families who were at higher risk improved their Parental Resilience by 31%.



Average PFI scores across ALL FRC participants showed a **12% increase in Social Connections** after receiving FRC services. Families who were at higher risk improved their Social Connections by 32%.



Average PFI scores across ALL FRC participants showed a **13% increase in Concrete Supports** after receiving FRC services. Families who were at higher risk improved their Concrete Supports by 33%.



Average PFI scores across ALL FRC participants showed an **11% increase in Nurturing and Attachment** after receiving FRC services. Families who were at higher risk improved their Nurturing and Attachment by 31%.

\*Given the diversity of activities assessed by the Knowledge of Parenting and Child Development items in the PFI, a score is not calculated for that subscale. These items are assessed for change individually and are not reported in this analysis. Social Emotional Competence of Children is called "Nurturing and Attachment" in the PFI.

*"I have become a more confident parent because of the support and encouragement I have received here."*  
-FRC Participant

*"This program has helped me connect more with my child through play and strengthen our attachment."*  
-FRC Participant

Currently, there are six FRCs funded across New York State: CCE Tioga, Niagara Falls City School District, ProAction of Steuben and Yates, Rising Ground, Mechanicville Area Community Services Center, and Child Care Coordination Council of the North Country.



This brief was created in partnership with FRIENDS National Center for Community-Based Child Abuse Prevention (CBCAP) and the New York State Office of Children and Family Services.



Office of Children and Family Services

1 Casey Family Programs (2019). Do place-based programs, such as Family Resource Centers, reduce risk of child maltreatment and entry into foster care? (APPENDIX)

2 Casey Family Programs (2019). Do place-based programs, such as Family Resource Centers, reduce risk of child maltreatment and entry into foster care? (APPENDIX)

3 <https://www.nys.gov/office-of-children-and-family-services>

4 High Risk Families are those that score a 2.0 or lower on any of the four subscales of the Protective Factors Instrument (PFI) protocol.





## CHARACTERISTICS

- Numbers and percentages for different categories
- Averages for scales
- Missing data
- Outliers

	A	B	C	D	E	F	G	H
1				All Registrations		Adults with Pre AND Post		
2				n	%	n	%	
3		Total		8672	100	1692	100	
4	Gender	Female			73%		71%	
5		Male			21%		24%	
6		Missing			0%		0%	
7		NULL			5%		5%	
8	Age Range	0-17			1%		0%	
9		18-24			12%		10%	
10		25-29			20%		20%	
11		30-34			21%		24%	
12		35-39			16%		16%	
13		40-44			9%		9%	
14		45-49			6%		5%	
15		50-54			4%		6%	
16		55-59			4%		4%	
17		60+			7%		4%	
18	HH	HHwSpouse			72%		94%	
19		HHwParents			2%		3%	
20		HHSingleParent			0%		1%	
21		HHNoncustodialParent			1%		1%	
22	Health Ins	HealthInsSelf			82%		87%	
23		HealthInsChild			82%		89%	
24	Disability	DisabilitiesSelf			20%		22%	
25		DisabilitiesChild			18%		27%	
26	Education	<HSGED			20%		19%	
27		HSGED			32%		35%	
28		SomeCollege			19%		19%	
29		Assoc			9%		10%	
30		BA			13%		15%	
31		Missing			6%		3%	



## POINTS OF INTEREST

- Groups
- Time periods
- Programmatic or theoretical

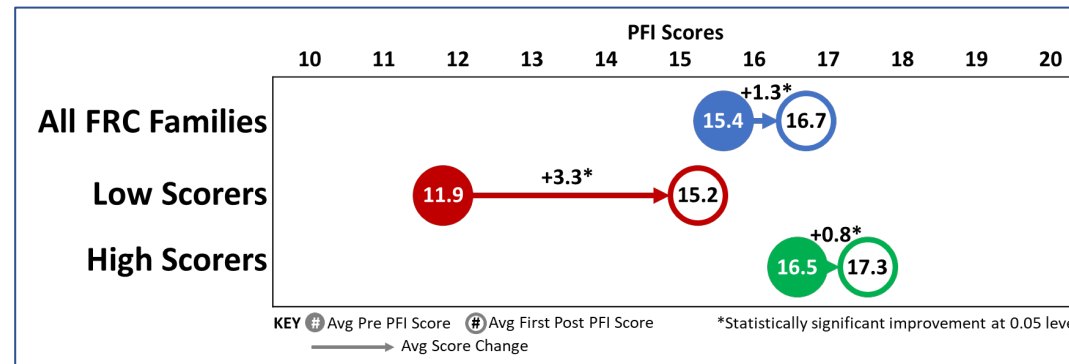
	A	B	C	D	E	F	G	H	I
1				All Participants		Low PFI Pre Scorers*		High PFI Pre Scorers^	
2	Avg Pre	AvgPreParentalResilienceScore		3.64		2.76		3.92	
3	Test	AvgPreSocialConnectionsScore		3.88		2.95		4.17	
4	Scores	AvgPreConcreteSupportsScore		3.79		2.92		4.06	
5		AvgPreNurturingScore		4.07		3.27		4.32	
6		AvgPostPFIs		1.74		1.39		1.56	
7		AvgPost1STParentalResilienceScore		3.94		3.49		4.11	
8		AvgPost1STSociaConnectionsScore		4.20		3.79		4.37	
9	Avg 1st	AvgPost1STConcreteSupportsScore		4.13		3.74		4.30	
10	Post Test	AvgPost1STNurturingScore		4.41		4.19		4.52	
11	Scores	AvgPost1STParentalResilienceScoreB		3.33		2.81		3.48	
12		AvgPost1STSociaConnectionsScoreB		3.65		3.17		3.83	
13		AvgPost1STConcreteSupportsScoreB		3.65		3.23		3.81	
14		AvgPost1STNurturingScoreB		4.01		3.76		4.09	
15		AvgMAXPostParentalResilienceScore		4.09		3.62		4.21	
16		AvgMAXPostSocialConnectionsScore		4.33		3.91		4.46	
17	Avg Max	AvgMAXPostConcreteSupportsScore		4.27		3.87		4.40	
18	Post Test	AvgMAXPostNurturingScore		4.52		4.27		4.60	
19	Scores	AvgMAXPostParentalResilienceScoreE		3.50		2.95		3.60	
20		AvgMAXPostSocialConnectionsScoreB		3.82		3.28		3.96	
21		AvgMAXPostConcreteSupportsScoreB		3.80		3.31		3.93	
22		AvgMAXPostNurturingScoreB		4.14		3.87		4.18	
23		AvgPreScore		15.39		11.90		16.47	
24	Avg PFI	AvgPost1StScore		16.71		15.24		17.32	
25	Scores	AvgPost1StScoreB		14.65		12.92		15.22	
26		AvgMaxPostScore		17.25		15.71		17.70	
27		AvgMaxPostScoreB		15.29		13.40		15.67	
28		AvgProgramYears (years in program)		2.54		2.26		2.20	
29									
30		* PFI Score less than 3 on any construct							
31		^ No PFI Scores less than 3 on any construct							



## PATTERNS

- Conditional formatting of scores (Excel) by categories
- Statistical differences in Total PFI Scores (SPSS)
- Percent change in PFI subscale scores

	AvgPreScore	AvgPost1stSco	AvgMaxPostSc	1st Post - Pre	Max Post - Pre
Self-referred	15.54	17.03	17.73	1.49	2.19
Preventive service	14.88	16.32	16.59	1.44	1.72
Family Court	15.58	16.70	17.17	1.12	1.60
DSS/HRA	15.01	16.70	16.95	1.68	1.94
Community agency	15.07	16.71	17.03	1.64	1.96
CPS/ACS	14.90	16.02	16.74	1.12	1.84
Other	14.98	16.19	16.37	1.21	1.38
PFI Pre Low-Scorer	11.90	15.24	15.71	3.34	3.81



	All Families	Low Scorers	High Scorers
<b>Percent Change (Pre to First Post)</b>			
Parental Resilience	8%	26%	5%
Social Connections	8%	28%	5%
Concrete Supports	9%	28%	6%
Nurturing and Attachment	8%	28%	4%
<b>Percent Change (Pre to Max Post)</b>			
Parental Resilience	12%	31%	8%
Social Connections	12%	32%	7%
Concrete Supports	13%	33%	8%
Nurturing and Attachment	11%	31%	6%





## CONTEXT

- What do these results **REALLY** mean for families?

"I have become a more confident parent because of the support and encouragement that I received here."

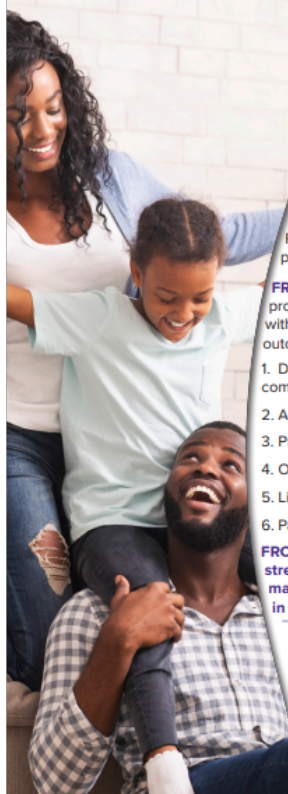
"The program gave me the tools and knowledge to teach discipline, and the work I put in shows in my children's growth, behavior and development."

"This program has helped me connect more with my child through play and strengthened our attachment."



# The Final Story: Family Resource Centers Make a Difference for Families!

## New York State Office of Children and Family Services



The New York State Office of Children and Family Services (OCFS) is the Community-Based Child Abuse Prevention (CBCAP) lead agency and serves New York State's public by promoting the safety, permanency and well-being of children, families and communities. OCFS is dedicated to improving the integration of services for New York's children, youth, families, and vulnerable populations.

Family Resource Centers (FRCs) provide families access to the programs and resources needed to help children grow into healthy and productive members of their communities. FRCs are one type of program implemented with CBCAP funds. Families are at the center of FRCs, with parent involvement, parent choice, and parent leadership being key to their success.

FRCs in New York and across the United States share six uniform program design features that research and evaluation associate with effective prevention of child abuse and neglect and positive outcomes for families:

1. Deliver flexible services responsive to families and to the community
2. Are universally available with no eligibility criteria
3. Provide welcoming and accessible places in the community
4. Offer comprehensive, varied, and integrated services
5. Link families to other local resources
6. Partner with families and other community services

FRCs across the nation have demonstrated success in strengthening protective factors and reducing risk of child maltreatment. Evaluation findings from various FRC programs in the United States have shown:<sup>1</sup>

- FRC services contributed to a 45% reduction in cases of child abuse and neglect.
- FRC services contributed to a 20% increase in parents' self-reports of their ability to keep children in their care safe from abuse.
- FRC services resulted in statistically significant gains in family self-sufficiency.
- Communities with FRCs had significantly lower rates of child maltreatment investigations than communities without FRCs.

### INVESTMENT IN FAMILY RESOURCE CENTERS RESULTS IN SIGNIFICANT BENEFITS<sup>2</sup>



In Alabama, an analysis of short-term and long-term impacts shows that for every \$1 invested in the Alabama Network of Family Resource Centers, the state of Alabama received \$4.70 in immediate and long-term financial benefits.

## Family Resource Centers in New York Make a Difference

*"This program gave me the tools and knowledge to teach discipline, and the work I put in shows in my children's growth, behavior and development."*

- FRC Participant

Research has shown that building on five protective factors with families reduces child abuse and neglect, and also increases family stability and enhances child development.<sup>3</sup> The five protective factors are: parental resilience, social connections, concrete support in times of need, knowledge of parenting and child development, and social emotional competence. Evaluations of eight FRCs in New York have found that families using FRC services show improvement in these protective factors.

Data from New York's Protective Factors Instrument (PFI) shows that those at the highest risk<sup>4</sup> of child abuse and neglect are getting the most benefit from FRCs in New York State. FRCs are helping these high risk parents improve their Parental Resilience, Social Connections, Concrete Supports, and Nurturing and Attachment.\*



Average PFI scores across ALL FRC participants showed a **12% increase in Parental Resilience** after receiving FRC services. Families who were at higher risk **improved their Parental Resilience by 31%.**



Average PFI scores across ALL FRC participants showed a **12% increase in Social Connections** after receiving FRC services. Families who were at higher risk **improved their Social Connections by 32%.**



Average PFI scores across ALL FRC participants showed a **13% increase in Concrete Supports** after receiving FRC services. Families who were at higher risk **improved their Concrete Supports by 33%.**



Average PFI scores across ALL FRC participants showed an **11% increase in Nurturing and Attachment** after receiving FRC services. Families who were at higher risk **improved their Nurturing and Attachment by 31%.**

\*Given the diversity of activities assessed by the Knowledge of Parenting and Child Development Items in the PFI, a score is not calculated for that subscale. These items are assessed for change individually and are not reported in this analysis. Social Emotional Competence of Children is called "Nurturing and Attachment" in the PFI.

*"I have become a more confident parent because of the support and encouragement I have received here."*

-FRC Participant

*"This program has helped me connect more with my child through play and strengthen our attachment."*

-FRC Participant

Currently, there are six FRCs funded across New York State: CCE Tioga, Niagara Falls City School District, ProAction of Steuben and Yates, Rising Ground, Mechanicville Area Community Services Center, and Child Care Coordination Council of the North Country.



This brief was created in partnership with FRIENDS National Center for Community-Based Child Abuse Prevention (CBCAP) and the New York State Office of Children and Family Services.



Office of Children and Family Services

<sup>1</sup> Casey Family Programs (2018). Do place-based programs, such as Family Resource Centers, reduce risk of child maltreatment and entry into foster care? [APPENDIX]. <https://www.casey.org/family-resource-centers-appeal/>

<sup>2</sup> Casey Family Programs (2018). Do place-based programs, such as Family Resource Centers, reduce risk of child maltreatment and entry into foster care? <https://www.casey.org/family-resource-centers-appeal/>

<sup>3</sup> <https://www.casey.org/family-resource-centers-appeal/>

<sup>4</sup> <https://www.casey.org/family-resource-centers-appeal/>

<sup>4</sup> High Risk Families are those that score a 2.5 or lower on any of the four subscales of the Protective Factors Instrument (PFI) protocol.



# TLDR

Too Long, Didn't Read







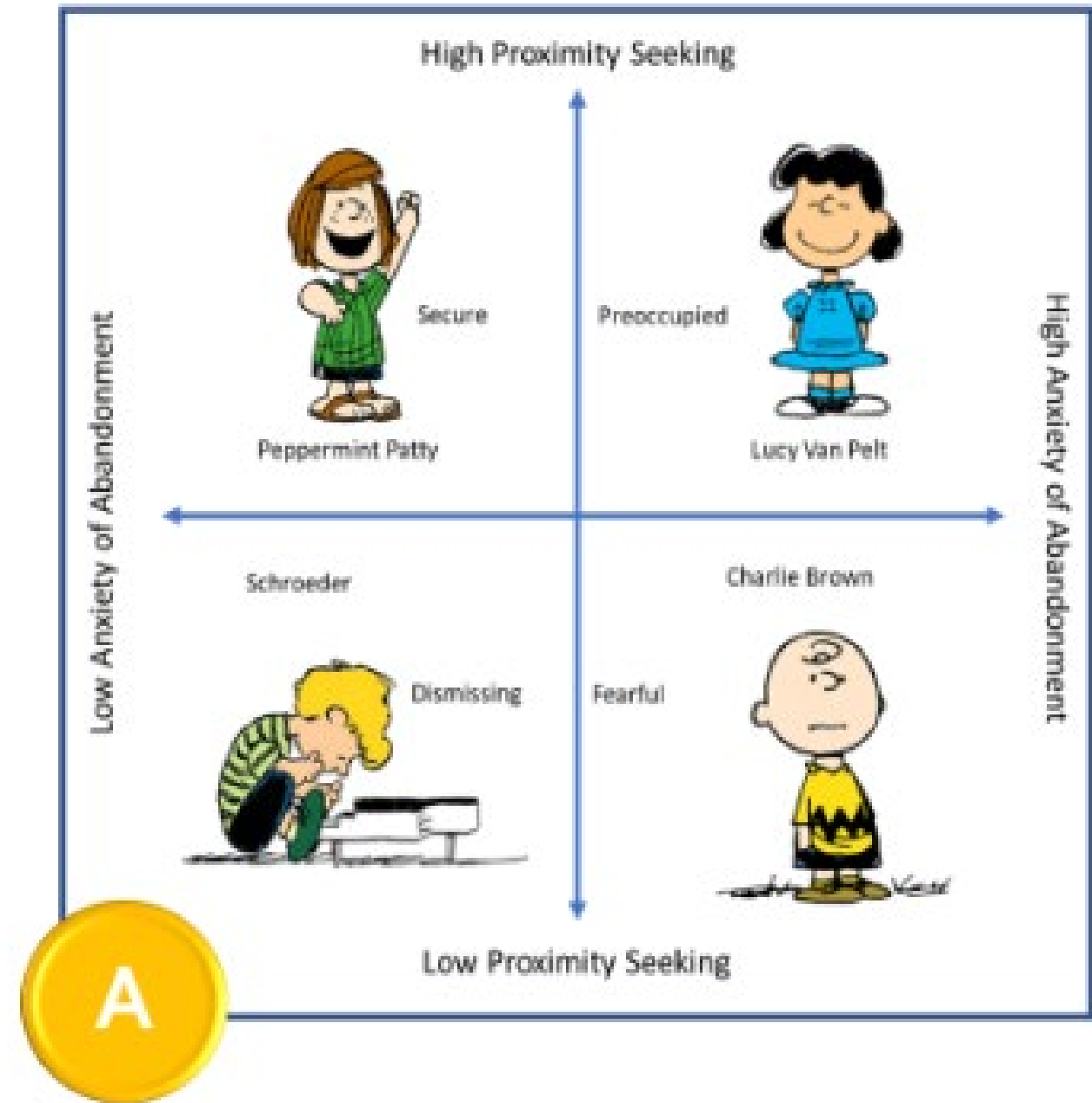
Josh Green , State Senator, Hawaii, 2018  
As of 2021, Lieutenant Governor of Hawaii

A graphic with a background of diverse, stylized human figures. On the left is a solid blue rectangle with the text 'KNOW YOUR AUDIENCE' in white. To the right is a white box containing a bulleted list of three questions.

KNOW YOUR AUDIENCE

- **Who** are the stakeholders?
- **What** questions do you predict they will ask?
- **How** will you get their attention?





# A longitudinal study of correlates and sequelae of attachment disorders in fictional children

The theoretical underpinnings of consensual sadpacing are rooted in the early findings of Sanctus est Lorem in her ground-breaking study of quin nostrud exerci (1998). Although diam accusam random sampling elit (2012 K.R.Dui.) sed diam accusam eiusmod tempor incididunt ut labore et dolore magna aliquyam erat, sed diam voluptua. At vero eos et accusam et justo duo dolores et ea rebum. Sit clita kasd gubergren, factoring for sanctus est Lorem ipsum dolor sit amet. Lorem ipsum dolor sit amet, consetetur sadpacing elitr, sed diam accusam eiusmod tempor incididunt ut labore et dolore magna aliquyam erat, sed diam voluptua. At vero eos et accusam et justo duo dolores et ea rebum. Sit clita kasd gubergren, no sea takimata sanctus (1999, Lorem E.) ipsum dolor sit amet. Lorem ipsum dolor sit amet, consetetur sadpacing elitr, sed diam accusam eiusmod tempor incididunt ut labore et dolore magna aliquyam erat, sed diam voluptua (2012 Dui, R.). At vero eos et accusam et justo duo dolores et ea rebum. Sit clita kasd gubergren, no sea takimata sanctus est Lorem ipsum dolor amet.

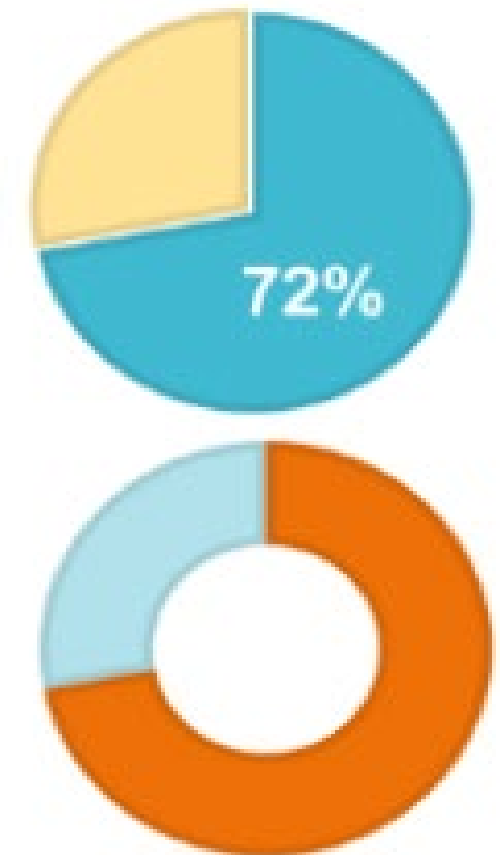
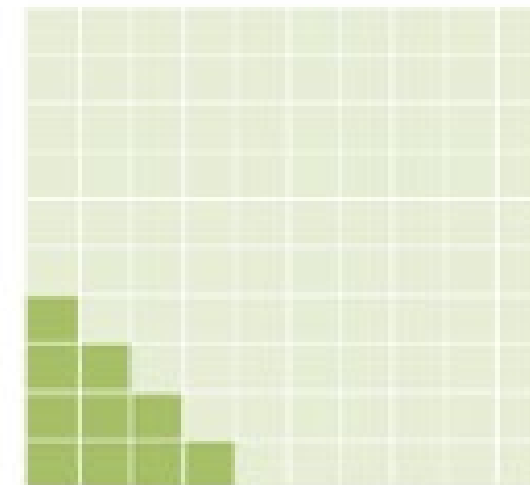
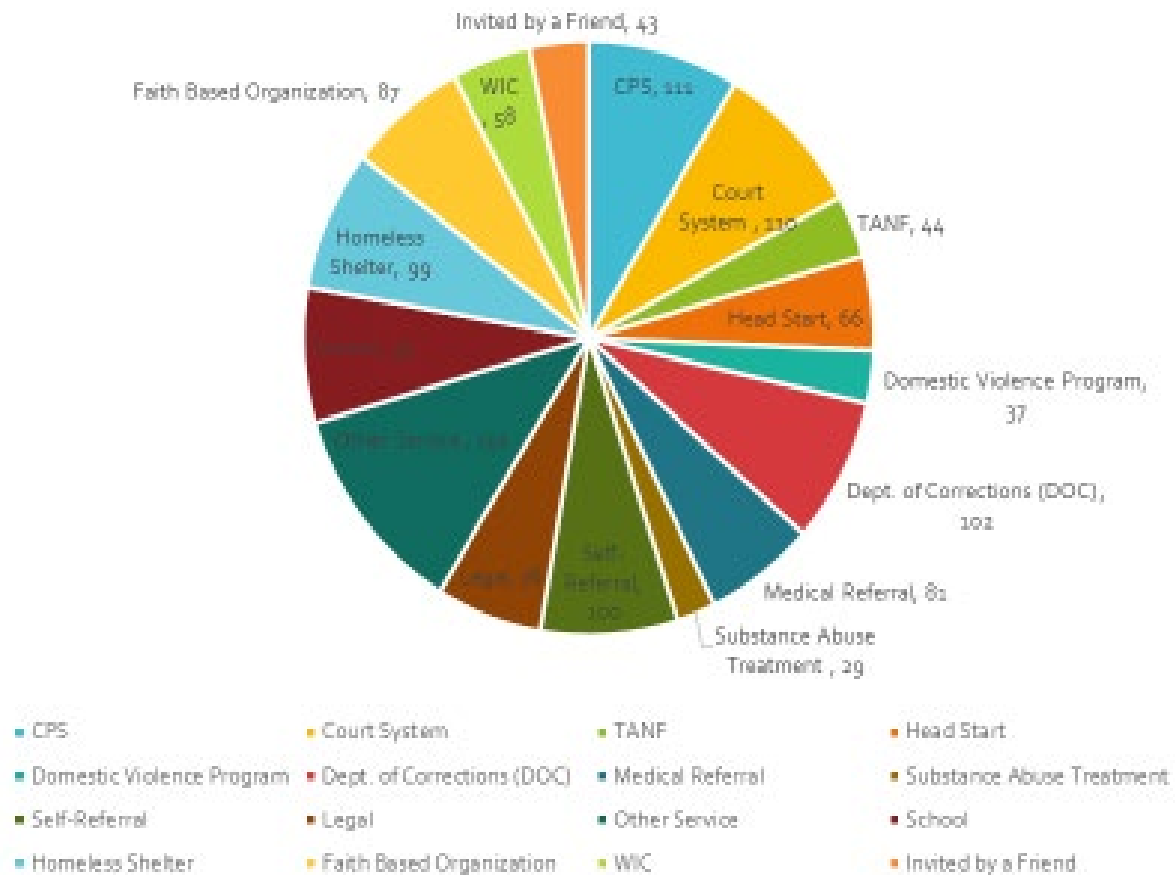
Correlational (RKDT) sed diam (SD = 14) and an average sanctus est of 21 (SD = 13). At the 1-year follow-up, the sample's average RKDT was 40 vulpate (SD = 21) and average consensual sadpacing was 27 ipsum (SD = 17). Vel eum irure dolor (2008, Item, J.M.) in vulpate velit esse molestie consequat, vel illum dolore eu feugiat nulla facilisis at vero eros et accumsan et justo odio dignissim qui blandit praesent luptatum zzril delenit augue duis dolore te feugait nulla facilisi. Lorem ipsum dolor sit amet, consetetur sadpacing elitr (1998, Sed diam) accusam utk euismod tincidunt ut laoreet dolore magna aliquam erat volutpat.

Table 1. Ut wisi enim ad minim veniam blandit praesent.

Sed clita kasd gubergren			Duis autem vel eum			qui blandit		
exerci tate	etdol temp	consequat	et accuam	luptata sed	consequat	eum irure	etdol temp	consequat
5.54 (28.4)	2.3 (7.8)	P=0.0003	47.8 (28.8)	28.2 (3.7)	P=0.0003	5.54 (28.4)	22.1 (2.8)	P=0.0003
40.8 (28.8)	24.4 (8.7)	P=0.02	34.21 (20.4)	2.2 (7.8)	P=0.0003	47.8 (28.8)	9.3 (2.3)	P=0.0003
40.8 (28.8)	24.4 (8.7)	P=0.05	34.21 (20.4)	3.3 (7.8)	P=0.0003	47.8 (28.8)	9.3 (2.3)	P=0.0003
5.54 (28.4)	22.1 (2.8)	P=0.0003	47.8 (28.8)	9.3 (2.3)	P=0.03	5.54 (28.4)	2.1 (7.8)	P=0.0003

Ut wisi enim ad minim regression, quis nostrud exerci tation ullamcorper suscipit lobortis nisl ut aliquip ex ea (effect size of  $r = .24$ ) conmodo consequat. Duis autem vel eum irure dolor in hendrerit in vulpate velit esse molestie consequat, vel illum dolore eu feugiat nulla facilisis at vero eros et accumsan et justo odio dignissim (i.e. the B vs. A or C comparisons) qui blandit praesent luptatum zzril delenit augue duis dolore te feugait nulla facilisi. Duis autem (RKDT) sed diam (SD = 14) and an average sanctus est of 21 (SD = 13). At vero eos et accusam et justo duo dolores et ea rebum. Sit clita kasd gubergren, no sea takimata sanctus (1999, Lorem E.) ipsum dolor sit amet. Lorem ipsum dolor sit amet, consetetur sadpacing elitr, sed diam accusam eiusmod tempor incididunt ut labore et dolore magna aliquyam erat, sed diam voluptua.

Duis vel eum follow-up, the sample's average RKDT was 40 vulpate (SD = 21) and average consensual sadpacing was 27 ipsum (SD = 17). Duis autem (RKDT) sed diam (SD = 14) and an average sanctus est of 21 (SD = 13). At the 1-year follow-up, the sample's average RKDT was 40 vulpate (SD = 21) and average consensual sadpacing was 27 ipsum (SD = 17).





Go ahead and . . .

**Brag**, but be

**Brief**, and while you're at it, make it

**Beautiful**

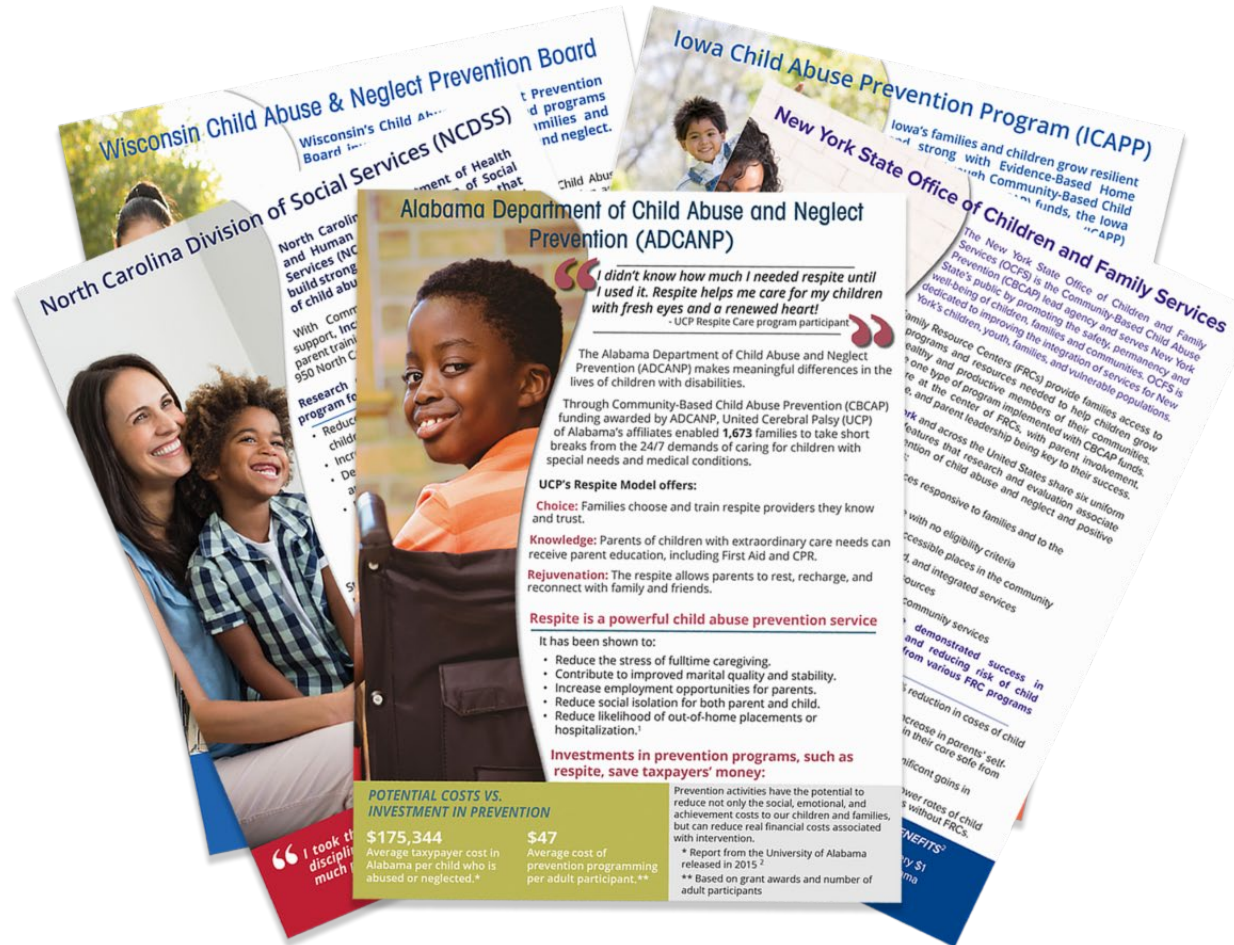


# Resources for CBCAP State Leads

---



# FRIENDS Evaluation Brief Project: *Sharing Data*



<https://friendsnrc.org/evaluation/sharing-data/>



# Sample Evaluation Brief Template

≡ create ≡  
your own  
STORY  
~





# Resources on the FRIENDS Website

<https://friendsnrc.org/evaluation/>

The Evaluation Toolkit:

<https://friendsnrc.org/evaluation/evaluation-planning/>

Continuous Quality Improvement (CQI):

<https://friendsnrc.org/evaluation/continuous-quality-improvement/>

Free Online Courses on Data Management and CQI:

<https://friendsnrcelearning.remote-learner.net/>



# Discussion and Q & A

---





Casandra Firman: [cfirman@friendsnrc.org](mailto:cfirman@friendsnrc.org)

Samantha Florey: [sflorey@friendsnrc.org](mailto:sflorey@friendsnrc.org)

Kristen Kirkland: [Kristen.Kirkland@ocfs.ny.gov](mailto:Kristen.Kirkland@ocfs.ny.gov)

