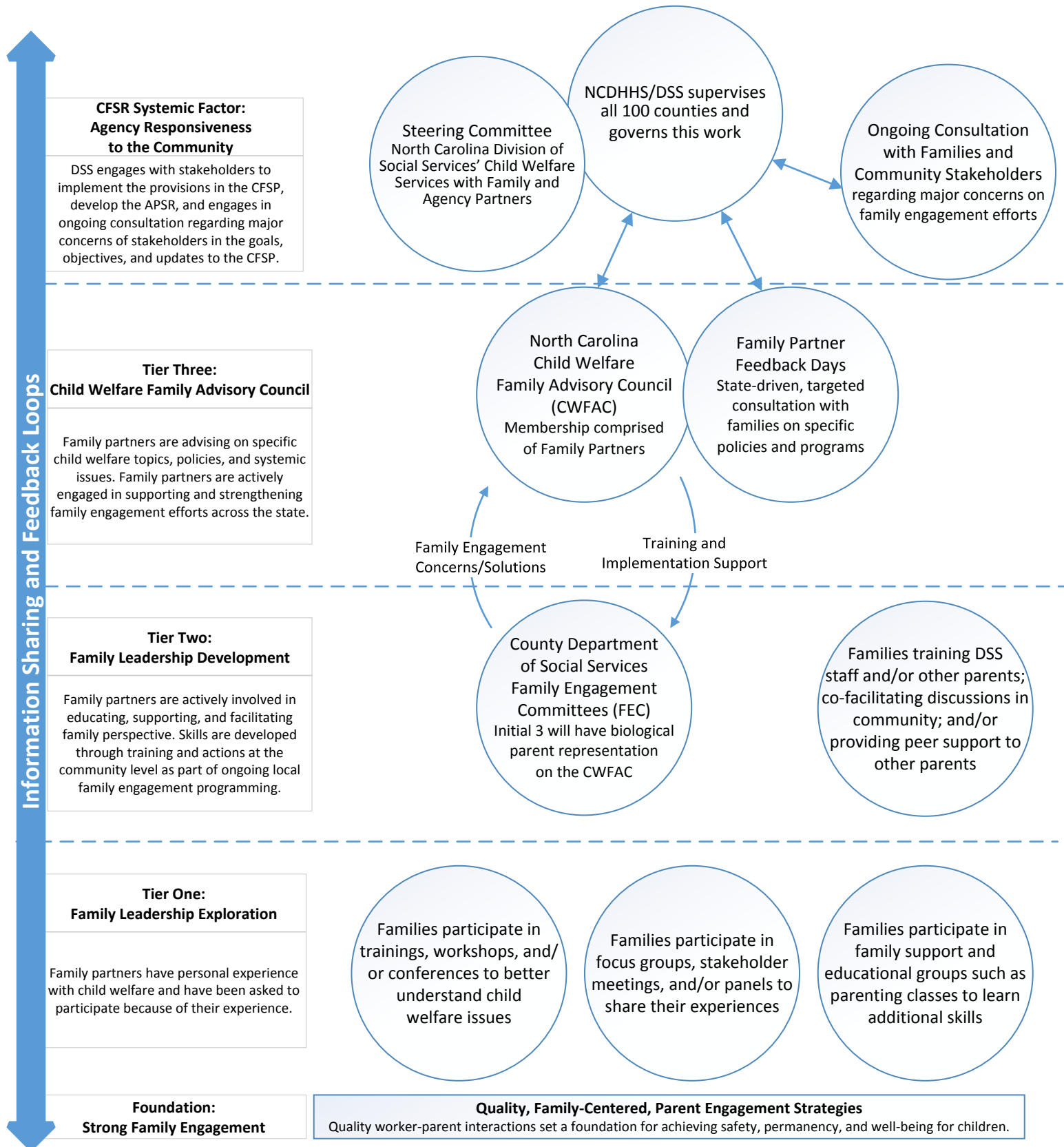


North Carolina Child Welfare Family Leadership Model

North Carolina Division of Social Services (DSS) recognizes that families served by the child welfare system play an integral part of program development, implementation, and evaluation. The North Carolina's Child Welfare Family Leadership Model ensures that family voice informs state-level decisions and aligns county family engagement/leadership approaches with state-level system efforts.

Last updated October 9, 2018



A **Family Partner** is defined as a youth or adult who has received services or is the caregiver/parent of someone who has received services and who has firsthand experience with the child welfare system. Therefore, when we refer to *Family Partners* we are speaking of both youth and adults.

A **Family Engagement Committee (FEC)** is defined as a group of individuals comprised of biological parents who have been involved in the child welfare system - along with other families and community stakeholders - at the county level who come together to discuss, implement, and support strategies to improve family engagement and permanency for children.