

FRIENDS Peer Learning Call:

Making the Evidence around Economic and Concrete Supports Actionable

February 14, 2024



How to Participate in Today's Discussion Session

Participant audio will be muted. Participants will be encouraged to unmute their lines to participate in discussion throughout the session.

We will also be monitoring questions through the Chat box and answering them at designated times during the discussion.

This session is being recorded and will be available for viewing once it has been archived. We will notify everyone by e-mail when it is available.



Overview of today's PLC

1. Chapin Hall work on economic and concrete supports (ECS) for families
2. FRIENDS Learning Community
3. Two states, Texas and New Hampshire, made the evidence actionable
4. Children's Bureau updates



Chapin Hall's work on ECS

Multiple Material & Economic Hardships Overload Families and Increase Risk for Child Welfare Involvement



Adapted from: (Conrad-Hiebner, 2020) (Slack, 2011) (Sweetland, 2021)

Visual created by
Chapin Hall at the University of Chicago

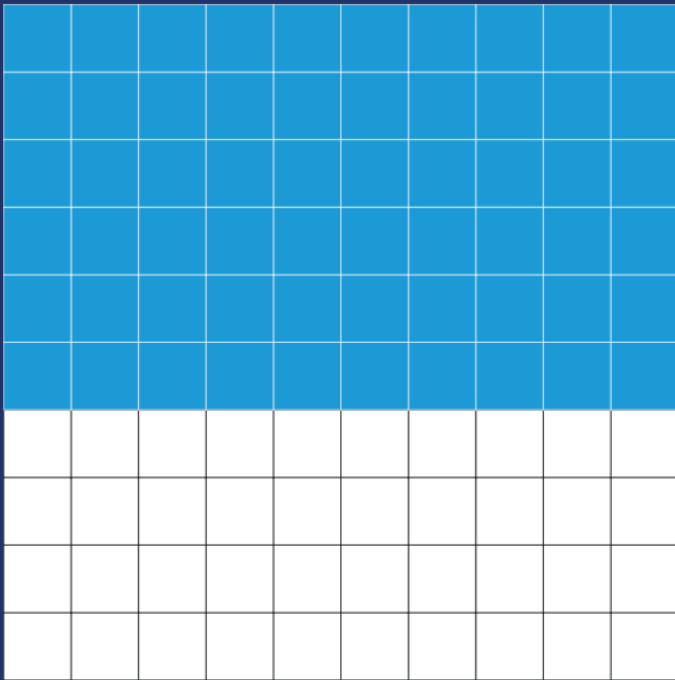


Agenda for the six meetings of the Learning Community

- April – Overview of ECS research
- May – Access to financial supports such as TANF, tax credits, direct cash, flexible funds
- June – Access to early childhood care and supports such as WIC, SNAP
- July – Access to healthcare
- August – Access to housing supports
- September – Broader policy changes for cross-system alignment



From the Chapin Hall slide deck, April 2023



60%+

of substantiated CPS responses nationally involve **neglect only**

...and provision of economic & concrete supports is associated with decreased risk for *both* neglect and physical abuse

(Child Maltreatment 2019)



Chapin Hall slide deck, April 2023

The Intersection of Family Economic Insecurity & Child Welfare Involvement

Most reliable **economic predictors** of **child welfare involvement**



(Conrad-Hiebner, 2020 systematic review)

Strongest predictors of investigated neglect reports



(Slack, 2011 cross-study comparison)



Chapin Hall slide deck, April 2023

Overview of Economic & Concrete Supports

Some examples include:

- ❖ Cash assistance
- ❖ Emergency funds
- ❖ Direct cash transfers
- ❖ Earned Income Tax Credit
- ❖ Child Tax Credit
- ❖ TANF benefits
- ❖ Employment
- ❖ Income

- ❖ Flexible funds
- ❖ In-kind benefits
- ❖ Child care
- ❖ Housing supports
- ❖ SNAP
- ❖ WIC
- ❖ Medicaid
- ❖ Unemployment benefits

- ❖ Legal support
- ❖ Rental assistance
- ❖ Utility assistance
- ❖ Furniture & equipment
- ❖ Transportation
- ❖ Food
- ❖ Clothing





Chapin Hall slide deck, April 2023

Economic Insecurity Is Widespread, But Families Move In and Out of Poverty

(Drake, 2014)
(Cellini, 2008)
(Mistry, 2002)
(Han, 2021)


Economic insecurity is widespread


 **Almost 50% of American families** with young children are at risk of poverty before their child enters kindergarten

 **More than 50% of all Americans** will spend a year in poverty *(by age 65)*

 **84% of all Black Americans** will spend a year in poverty *(by age 65)*

Families move in and out of poverty over time

 **Almost 50%** of those who become poor are out of poverty a year later

 **But more than 50% of those who previously left poverty will return to poverty within 5 years**

**THE VOLATILITY AND TURBULENCE CREATED BY ENTERING & LEAVING POVERTY
MAY CREATE SERIOUS STRESS FOR PARENTS AND IMPACT PARENTING**



Chapin Hall slide deck, April 2023

Economic & Concrete Supports As a Population-Level Strategy for Prevention of Child Maltreatment

Each additional \$1,000 that states spend annually on public benefit programs per person living in poverty is associated with:

- 4% reduction in child maltreatment reports
- 4% reduction in substantiated child maltreatment
- 2% reduction in foster care placements
- 8% reduction in child fatalities due to maltreatment

(independent of federal spending)

(Puls, 2021, state-level data FFY 2010–2017)

Public benefit programs included in this analysis:

- ✓ Cash, housing & in-kind assistance
- ✓ Low-income housing infrastructure development
- ✓ Child care assistance
- ✓ Refundable EITC
- ✓ Medical assistance programs (including Medicaid + CHIP)



Chapin Hall policy paths

RECONCEPTUALIZING & RESOURCING FAMILY WELL-BEING & PREVENTION OF CHILD WELFARE INVOLVEMENT WITH ECONOMIC & CONCRETE SUPPORTS



- Increased minimum wage & stable employment
- Income equality & mobility
- Paid Family Leave
- Earned Income Tax Credit (EITC)
- Child Tax Credit (CTC)

- Health care
- Child care & pre-K
- Housing
- Home visiting connecting to resources
- Flexible funds
- Direct cash transfers



- Expanded, equitable & integrated human-centered system with shared responsibility, outcomes & accountability to prevent child welfare involvement
- Assessment of family economic instability & risk at key touchpoints across human services
- Alternatives for mandatory reporters to connect families to resources

ECONOMIC DIFFERENTIAL RESPONSE, COMMUNITY PATHWAYS & NAVIGATION

- Redesigned policy & programmatic framework that centers "reasonable efforts" to prevent family separation and addresses root causes of child welfare involvement
- Provide economic & concrete supports paired with equitable access to evidence-based & culturally responsive services in communities to address family needs and reduce risk

SERVES AS FIREWALL TO PREVENT CHILD WELFARE INVOLVEMENT



- Narrowed use of child welfare to respond only when necessary
- Families offered legal counsel at first contact with Child Protective Services
- Address families' intensive needs with economic and concrete supports plus evidence-based practices
- Partnership with families and communities to co-design responsive & accessible service array that goes beyond "treatment"
- Continuously evaluate & monitor effectiveness and impact of interventions



Let's hear from state leads on their economic and concrete supports work





TEXAS
Department of Family
and Protective Services
Prevention & Early Intervention

Texas Evidence in Action

Basic and Concrete Supports for Families

February 14, 2024



TEXAS

Department of Family and Protective Services

Prevention & Early Intervention

The Work of PEI



We provide grant funding for programming.

PEI funds community-level programs designed to promote positive outcomes for children, youth, and families and create thriving communities

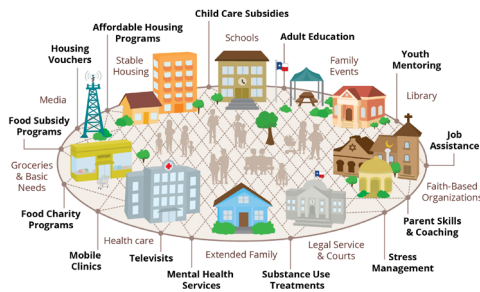
Population-Based Outreach.

We help normalize the challenges of parenting and encourages seeking help through parenting tips, articles, information, and resources



We support community-coalition building.

We provide research, expertise and funding to support Community level efforts to coordinate services and build effective coalitions.



Strengthening Relational Health.

We recommend best practices and policies for building on the strengths of both caregivers and children to promote strong families and resilient children





TEXAS

Department of Family
and Protective Services

Prevention & Early Intervention

Concrete and Economic Supports

- All grantees incorporate intentional resource and service referrals
- During the COVID-19 pandemic, we increased the amount of basic needs support grantees could provide to families
 - Up to **\$500** basic needs support per enrolled family, per year, where funding allowed **Ongoing**
 - Up to **\$1,000** per enrolled family Temporary Assistance for Needy Families (TANF) pandemic funding to some grantees **Ended**
 - Up to **\$500** per enrolled family Maternal Infant and Early Childhood Home Visiting (MIECHV) ARPA funding to Texas Home Visiting grantees **Through FY24**
 - Basic Needs Supports Innovation Grants funded through ARPA supplemental CBCAP funding





TEXAS

Department of Family
and Protective Services

Prevention & Early Intervention

Basic Needs Support Study

- Multi-year mixed methods study using administrative data and results of a Family Experience Survey

Research aims assessed:

- Changing needs and wellbeing of families served by PEI during the COVID-19 pandemic
- Extent to which PEI's supplemental supports benefited families
- Other supports families accessed during the pandemic



Asked families to report:

- Their experience during the pandemic
- Receipt of basic needs support from PEI grantees
- Current wellbeing
- Use of other state and federal supports



TEXAS

Department of Family
and Protective Services

Prevention & Early Intervention

Basic Needs Support Study

Who did basic needs support go to?

- From the survey, we know most families were hit hard by the pandemic

73% of the survey sample experienced at least one of the following pandemic hardships

61% lost their job

42% saw their income decrease

25% say their health deteriorated



Basic Needs Support Study

Grantees were more likely to distribute basic needs to...

Caregivers pregnant at enrollment

Unmarried parents and couples

Caregivers with less than a high school education

Households with young children



Households with low incomes

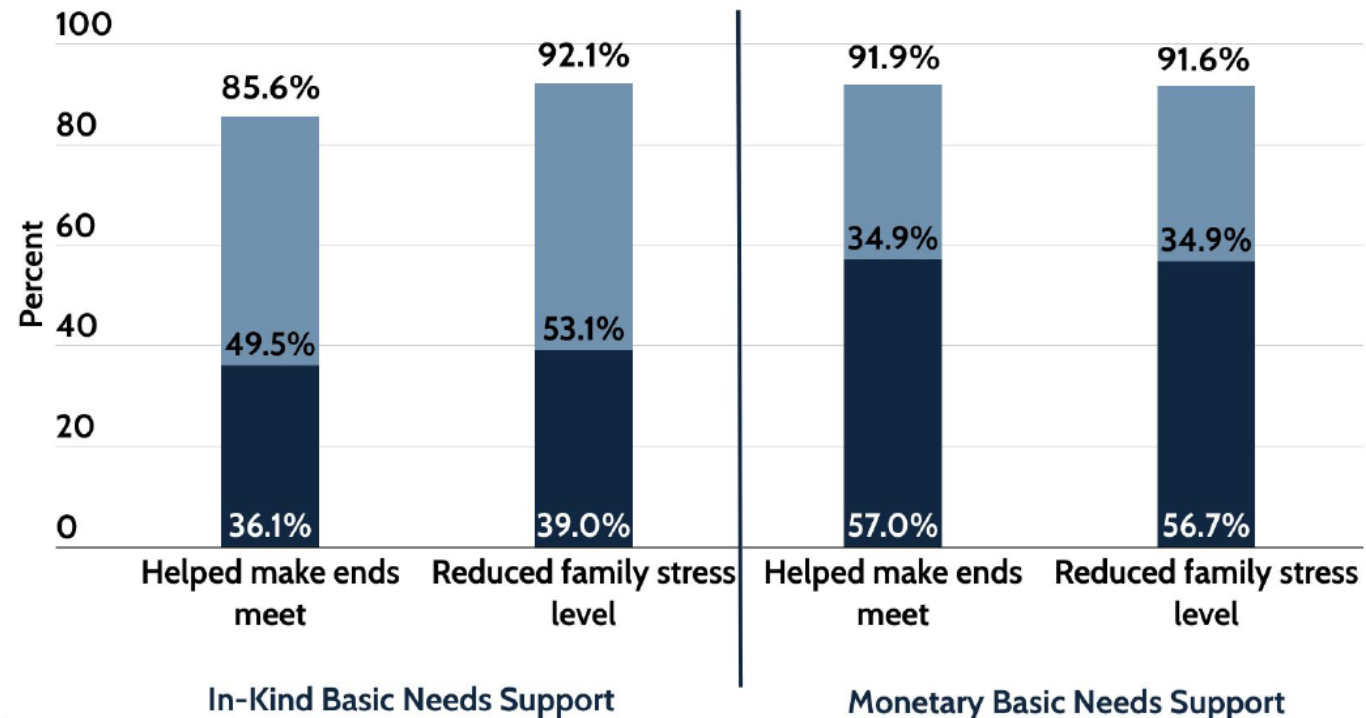
Caregivers of Hispanic ethnicity

Non-English-speaking households



Basic Needs Study Findings

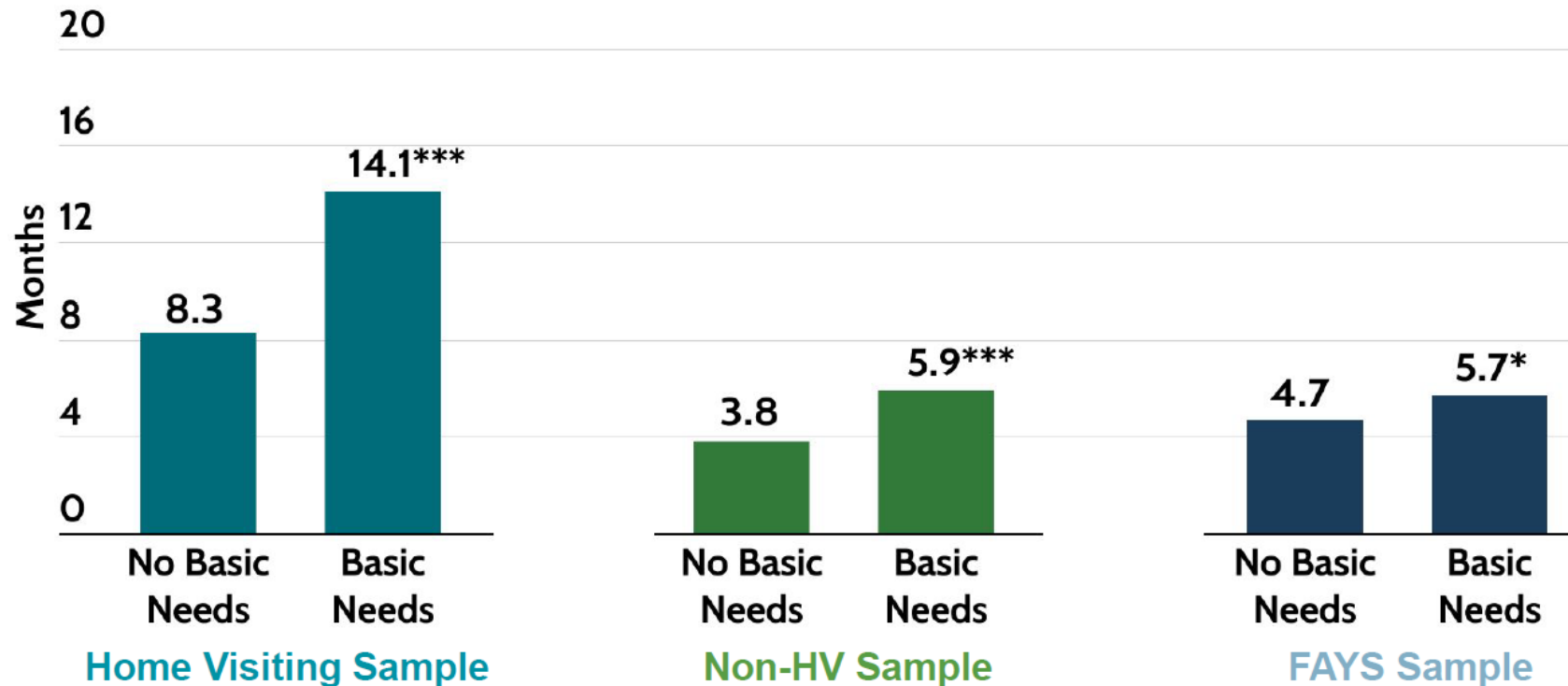
HV families appreciated the basic needs support they received from grantees during the pandemic





Basic Needs Study Findings

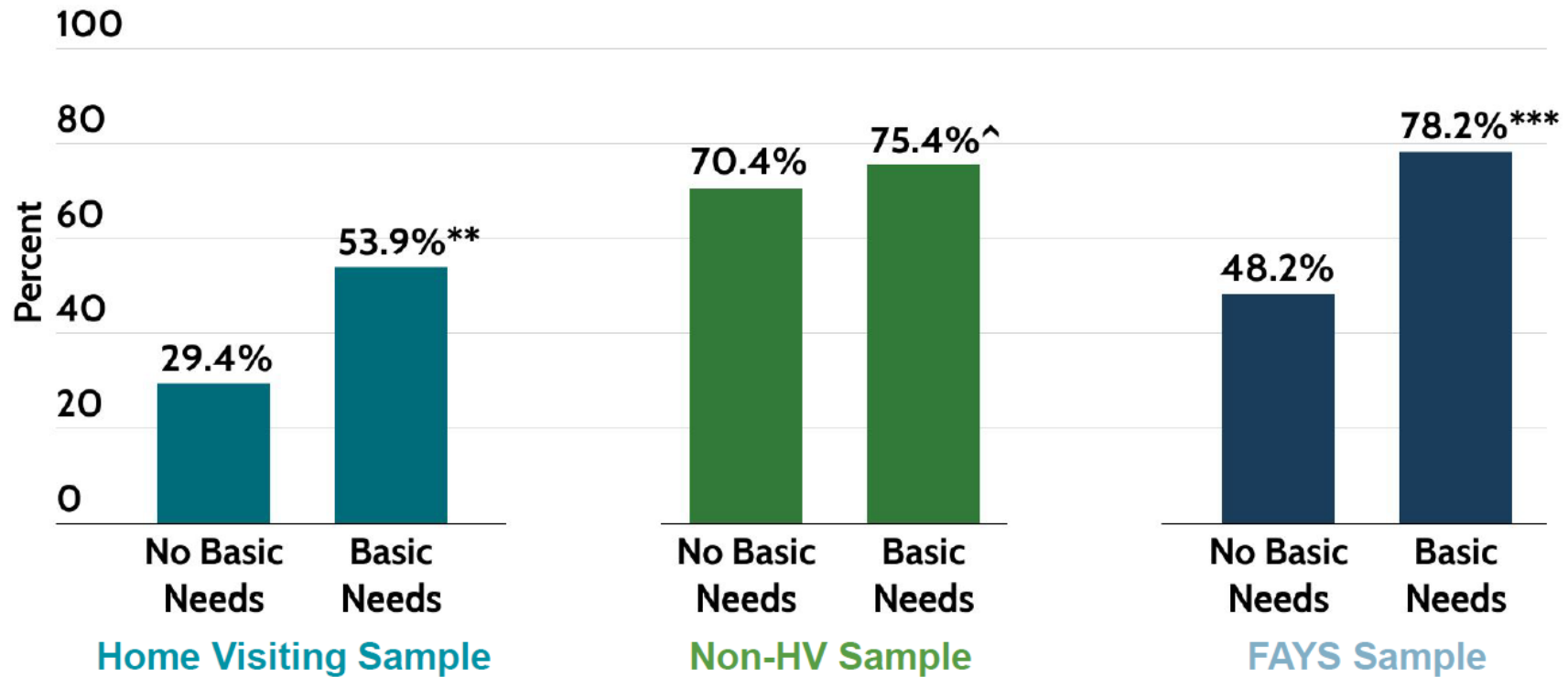
Receiving basic needs support is associated with longer program retention





Basic Needs Study Findings

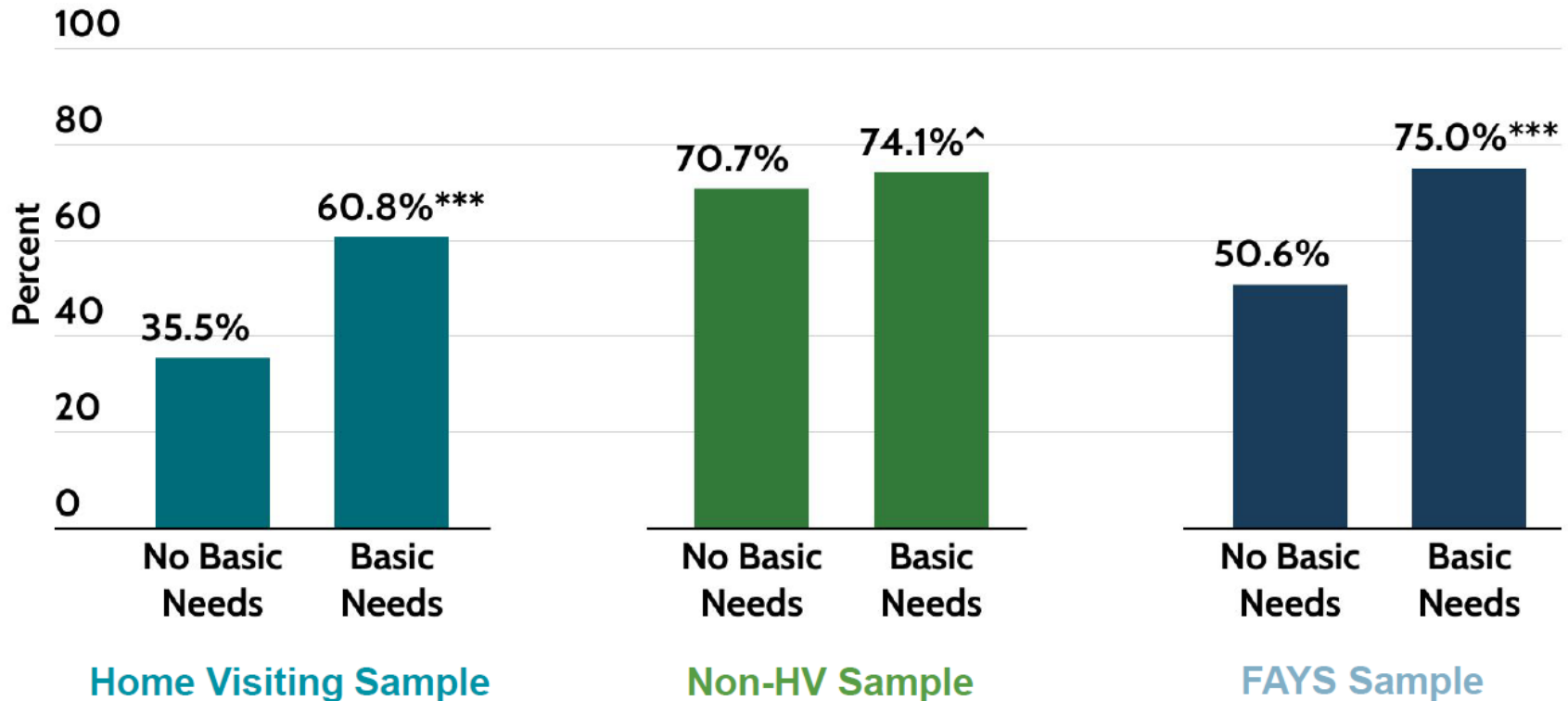
Receiving basic needs support is associated with higher rates of program completion





Basic Needs Study Findings

Receiving basic needs support is associated with higher rates of meeting the program's objectives





Basic Needs Study

Summary of Findings and Key Takeaways



Basic needs support is linked to positive outcomes for families



Opportunities remain to reduce disparities in the use of and familiarity with federal programs and resources



Families continue to struggle to meet their basic needs



Continue providing basic needs support



Continue serving as a trusted source of information



Continue connecting families to other community resources



TEXAS
Department of Family
and Protective Services

Prevention & Early Intervention

Thank you

Claire Hall, Federal Policy, Specialist, DFPS-PEI
Claire.hall@dfps.texas.gov



NEW HAMPSHIRE

Children's Trust

New Hampshire chapter of  Prevent Child Abuse America

Economic and Concrete Supports

Direct assistance to NH families via our Network of Family Resource Centers

- **Trestle Funds - \$600-\$900K per year from NH Charitable Foundation for meeting immediate needs of families. Low barrier.**
- **Concrete Supports for Kinship families - \$90K per year, funding provided by CBCAP and/or CBCAP ARPA**
- **Baby2Baby – Distribution of diapers, wipes, toys, and other early childhood supplies.**
- **Data related to family economic and concrete needs and these distributions is summarized in this report:
https://www.nhchildrenstrust.org/files/ugd/38c037_06c4403aac594a9b8b10a2dfe2285a0a.pdf**

Advocacy

Current approach

- Work in concert with three NH organizations that have 501c4 status and advocate for child and family issues
 - New Futures
 - MomsRising
 - Save the Children NH
- We do not (yet) have dedicated staff for policy
- Armed with knowledge from CoP, we have developed a database of research and policy points (demo)



Moving upstream

- **From reactive to proactive**
 - Rather than “simply” testifying for or against bills, consider working with partners and legislators to introduce bills
 - Opportunities to work more closely with state departments as they develop rules and regulations to implement policies
- **From band-aid solutions to policy changes**
 - We provide phenomenal concrete supports to families, but we could support more families earlier through effective policy so fewer would need emergency assistance
- **Where do we leverage our current staff and resources for the biggest bang for the buck?**
- **NH Challenges**
 - 3rd largest legislature in the free world (400 reps, 24 senators)
 - Only state with an Executive Council as explicit check on the Governor (approve any state contract for \$5K or more)
 - Named destination of the Free State Project (libertarianism on steroids)

List of Resources

- Weiner, D. A., Anderson, C., & Thomas, K. (2021). *System transformation to support child and family well-being: The central role of economic and concrete supports*. Chicago, IL: Chapin Hall at the University of Chicago.
<https://www.chapinhall.org/research/economic-supports-child-welfare/>
- Chapin Hall, Economic and Concrete Supports Projects Include Direct Cash Transfer Design and Evaluation, Evidence Reviews, and More,
<https://www.chapinhall.org/project/ecsapproach/>
- Puls, H. T., Hall, M., Anderst, J. D., Gurley, T., Perrin, J., & Chung, P. J. (2021). State spending on public benefit programs and child maltreatment. *Pediatrics*, 148(5), e2021050685. <https://doi.org/10.1542/peds.2021-050685>
- Chapin Hall policy experts collaborated with the American Public Human Services Association to create the "Evidence to Impact" policy tool.
https://www.chapinhall.org/wp-content/uploads/FINAL-ECS-Tool-with-Intro_6.14.23.pdf



Opportunity to Provide Feedback

Please take a moment to scan the QR code and fill out our short evaluation.

Your participation in the evaluation will help us to improve our future Peer Learning Calls.



SCAN ME