

Partnership

- Key stakeholders
- Goals objectives
- Planning/Dreaming
- Contracting
- Evaluation
- Quarterly meetings

Virtual Efforts

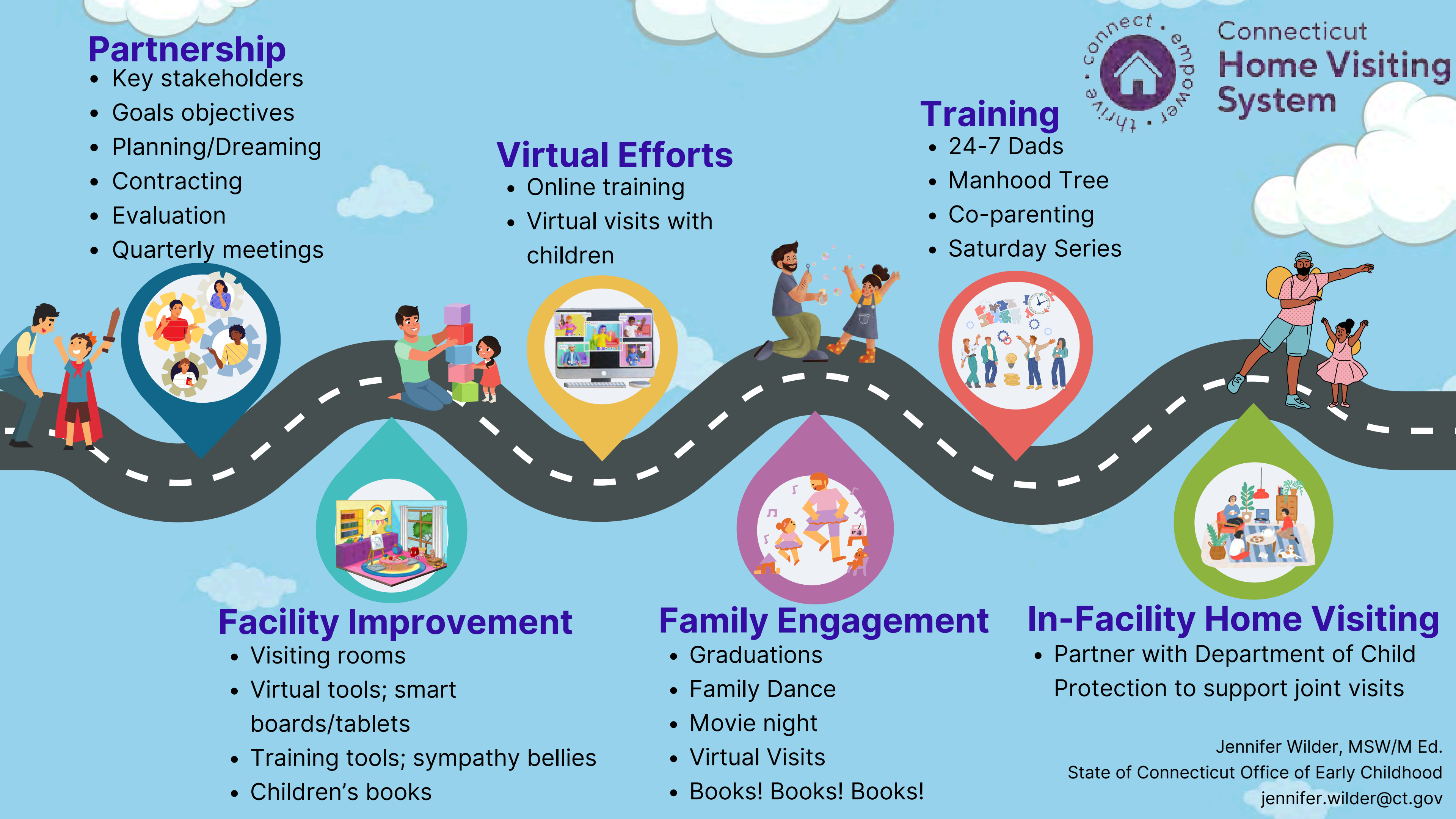
- Online training
- Virtual visits with children

Training

- 24-7 Dads
- Manhood Tree
- Co-parenting
- Saturday Series



Connecticut Home Visiting System



Facility Improvement

- Visiting rooms
- Virtual tools; smart boards/tablets
- Training tools; sympathy bellies
- Children's books

Family Engagement

- Graduations
- Family Dance
- Movie night
- Virtual Visits
- Books! Books! Books!

In-Facility Home Visiting

- Partner with Department of Child Protection to support joint visits

Jennifer Wilder, MSW/M Ed.
State of Connecticut Office of Early Childhood
jennifer.wilder@ct.gov

ALABAMA'S SUPPORT OF INCARCERATED MOTHERS & THEIR CHILDREN

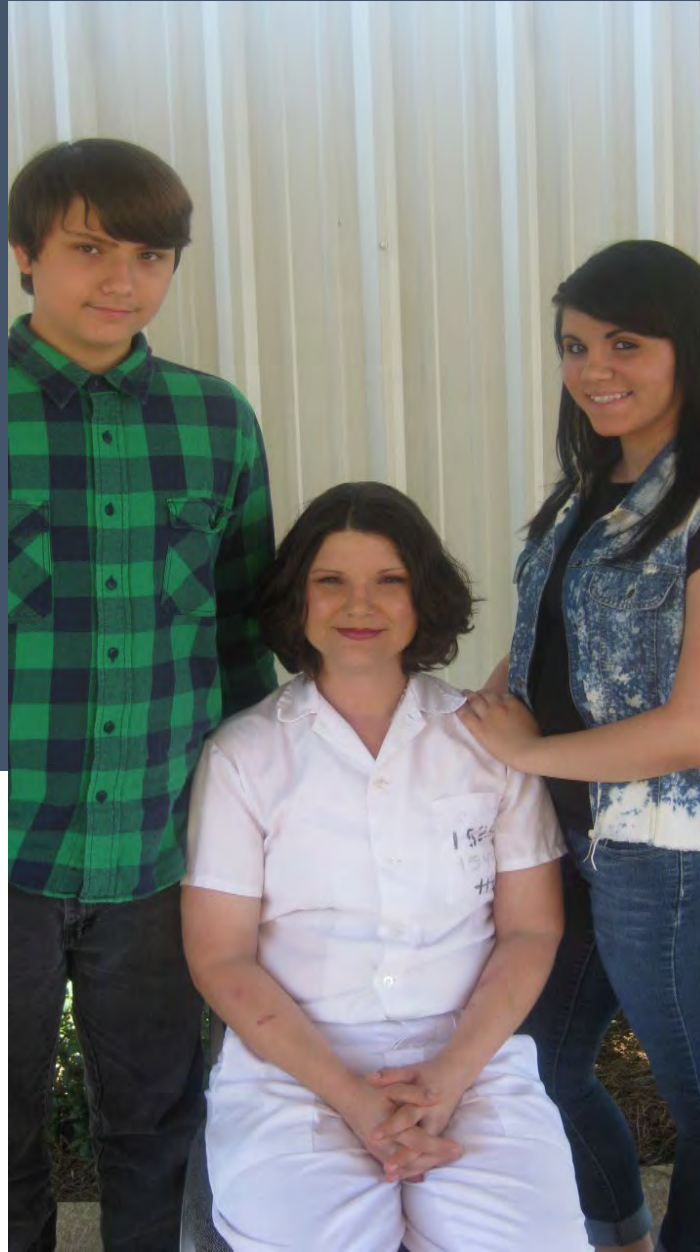
BAILEY WALLER, PROGRAM MANAGER

THE ALABAMA DEPARTMENT OF CHILD ABUSE & NEGLECT PREVENTION

THE CHILDREN'S TRUST FUND

Scope & Scale of Issue

- In past 40 years, the number of incarcerated women has grown twice that of men
 - In Alabama, women's prison population has grown while men's prison population has declined since 2009
- 80% of women incarcerated are mothers of children under the age of 18
- Close to 60% of these women were the primary caregiver to their minor children before sentencing



AID TO INMATE MOTHERS

- Parenting Classes
- Monthly Visitation Program
- Storybook Project





ALABAMA PRISON BIRTH PROJECT

- Weekly 120-minute prenatal and parenting education and support classes
- 1:1 doula support
- Milk Initiative





LOVELADY CENTER

- 9-12 month residential program for those in transition
- Parenting Classes
- Individual counseling



THANK YOU

Bailey Waller, Program Manager
Alabama Department of Child Abuse &
Neglect Prevention
The Children's Trust Fund

Bailey.Waller@ctf.alabama.gov

www.ctf.alabama.gov



Girl Scouts Beyond Bars

Shannon Luper

Girl Scouts of Eastern Oklahoma
Program Manager

Girl Scouts Beyond Bars (GSBB)

is a family **reunification** program
serving children with an incarcerated parent
breaking the cycle of intergenerational
incarceration





Est. 2003
Project M.E.N.D.

currently known as...
G.S.B.B.





**26,000+
children in
the State of
Oklahoma
have an
incarcerated
parent**





More than half of
these children lived
with their mother prior
to her incarceration

More than half have
not seen mom since
her arrest



HOW OKLAHOMA RANKS

46TH

Overall Child
Well-Being

38TH



Economic
Well-Being

49TH



Education

37TH

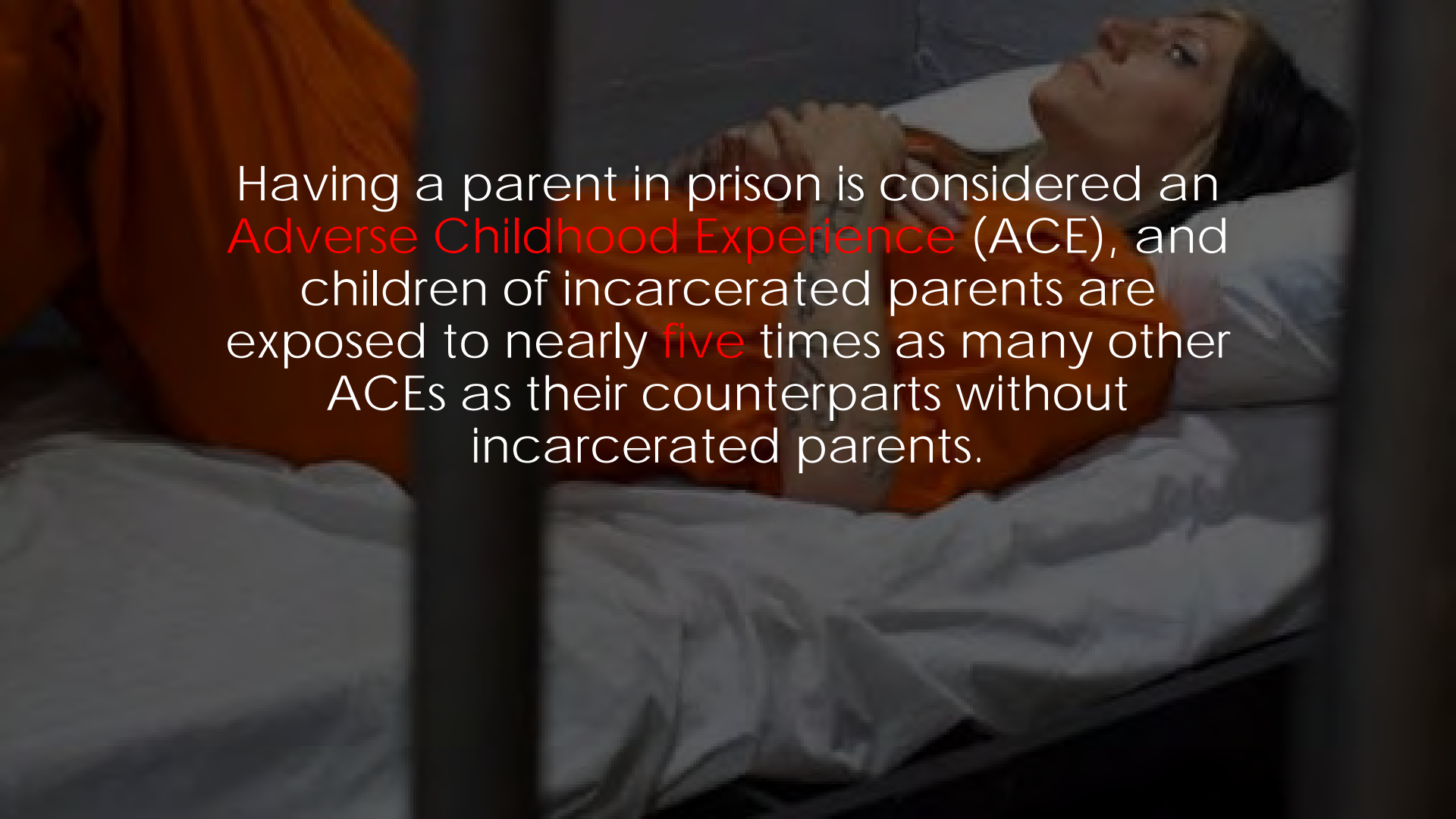


Health

43RD



Family &
Community

A woman with dark hair, wearing an orange jumpsuit, is lying in a hospital bed. She is looking upwards and to the right with a thoughtful or distressed expression. Her hands are clasped together near her chest. The bed has white linens, and the background is dark and out of focus.

Having a parent in prison is considered an **Adverse Childhood Experience** (ACE), and children of incarcerated parents are exposed to nearly **five** times as many other ACEs as their counterparts without incarcerated parents.

Children affected by incarceration - forgotten victims

Carry stigma of shame

Loss of financial support

Poor school performance

Self-harm & Suicidal tendencies

Increased risk of abuse

Increased risk of neglect





Children affected by incarceration are three to seven times more likely to end up incarcerated themselves

50% of the children
we transport to
prison to see mom
also has a father
incarcerated





Girl Scouts
are **BUILDERS!**

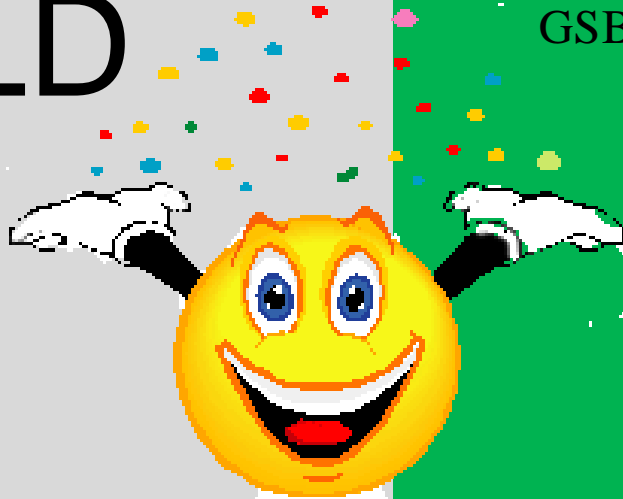
We build girls of
COURAGE
CONFIDENCE
CHARACTER

to make the world a better place.

Main focus:
CHILD

21 years


No Girl Scout who has completed
GSBB programming has been
incarcerated herself.





How do we do it?

HEALTHY FAMILY REUNIFICATION

The background of the slide features a sunset over a body of water. In the foreground, the silhouettes of a family—a man, a woman, and two children—are shown from behind. They are holding up large, dark letters that spell out the word 'FAMILY'. The man on the left holds the 'F', the woman in the center holds the 'M', the child on the left holds the 'I', the woman on the right holds the 'L', and the child on the right holds the 'Y'. The scene is backlit by the warm, golden light of the setting sun, creating a silhouette effect.

- Reunite
- Reestablish Relationship
- Reduce Separation Anxiety
- Improve Self-management of behavior
- Promote Healthy Communication
- Works toward healing injuries in the relationship
- Improve relationship within the entire family
- Improve overall self-worth

What is GSEOK method on breaking the cycle?

COMMUNICATION
CONNECTION
CONSISTENCY





Communication

with Caregiver

What matters to them?

How do they feel?

Are they being heard?

Connect Parent with child...

Monthly/Year-round in person
visits at the prison





CONSISTENT

WE ARE A YEAR ROUND PROGRAM

Parent/Child Troops

Peer to Peer outings

Community Troops

School break activities

Summer camp & activities

Girl Scouting in the school day

A background image featuring several grey paper cutouts of human figures holding hands in a line, set against a dark green background. The figures are arranged in a way that suggests a community or family unit. The text is centered over the middle of the image.

HELPING
THE PARENT,
HELPS
THE CHILDREN

What's next?

How do we plan on growing?

What can you do to help?

Who else needs these services?

Children who
have a father
incarcerated.

Presenter Name: Shannon Luper

Presenter Title: Girl Scouts Beyond Bars

Program Manager

Contact Info: 918-277-6032; sluper@gseok.org

Girl Scouts of Eastern Oklahoma website: GSEOK.ORG



Thank You



QUESTIONS??