

Using Predictive Analytics for Prevention Efforts in Little Rock



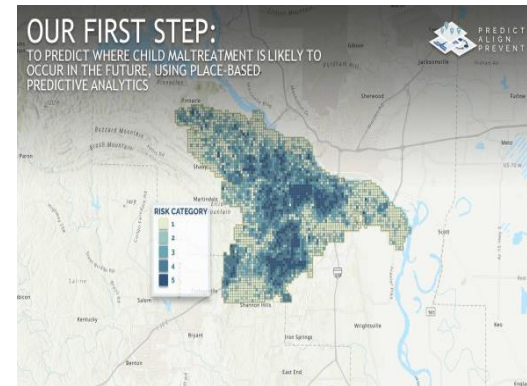
Partnering with a data science research team from the University of Arkansas, risk maps for child maltreatment were created.

The city of Little Rock was covered by a grid, with each grid cell measuring 1000 x 1000 ft.

Based on the PAP methodology, risk categories from 1 to 5 were assigned. The dark blue grid cells, Risk Category 5, represent the highest risk places for child maltreatment.

Place-based predictive analytics

Where will we find a child exhibiting the behavior of playing?



THE FOLLOWING 6 TOPICS FOR PREVENTION IN LITTLE ROCK WERE DETERMINED:

- Child abuse and neglect
- Infant mortality
- Suicide
- Teen birth
- Violent crime
- Chronic absenteeism

For our Little Rock Program we worked to identify and recruit experts in the following cross-sector categories to form our Align Coalition

- Child Care
- Child maltreatment, fatality
- Child maltreatment, Disability Services
- Domestic Violence
- Elder abuse
- Foster care
- Homelessness
- Homicide/police department
- Illicit drug use
- Infant mortality, Premature Birth
- Injury-related fatality
- Juvenile justice
- Low 3rd-grade reading proficiency
- Maternal morbidity / mortality
- Mental health department
- Poverty
- Prison recidivism
- Sex trafficking
- Suicide
- Teen pregnancy
- Violent crimes

