



nebraskachildren

AND FAMILIES FOUNDATION



Cultivating the good life for **all** of our children.

Introductions

- Name and Role
- Something interesting about your state
- What are you hoping to learn in this workshop?



Honestly, it's not for everyone!

A group of people are relaxing in a blue livestock tank (a large metal drum) floating down a river. The scene is set during sunset or sunrise, with a warm, golden glow over the water and the surrounding green hills. The text "LUCKY FOR YOU, THERE'S NOTHING TO DO HERE." is overlaid in large, white, sans-serif capital letters on the left side of the image. On the right side, there is a block of smaller text and a red graphic element at the bottom right.

LUCKY FOR YOU,
THERE'S NOTHING
TO DO HERE.

In Nebraska, we believe that only boring people get bored. So we invent our own fun. Like when we realized that a livestock tank would float, and thought, "It's a boat." Soon, "tankng" became the preferred method of meandering down our slow-moving rivers. It might not be everybody's cup of tea, but if it sounds as good to you as it did to us, go to VisitNebraska.com for a free Travel Guide. And welcome aboard.

Nebraska
HONESTLY. IT'S NOT FOR EVERYONE.



Did you know?

- More miles of river than any other state
- UNL Weight room is largest in the country (3/4 acre)
- Cozad, NE is where east meets west
- Baseball fans – come to the college series
- Buffett owns Dairy Queen
- Only Unicameral
- 911 System of communication was founded
- Marlon Brando's mother gave Henry Fonda acting lessons in Omaha
- In Blue Hill, no female wearing a hat that would scare a timid person can eat onions in public



Community Well-Being Prevention System

PREVENTION

A community-owned prevention system that utilizes and connects local partners to best support children and families so that they have what they need to thrive. Investing in children and families before trauma and crisis

LIFESPAN

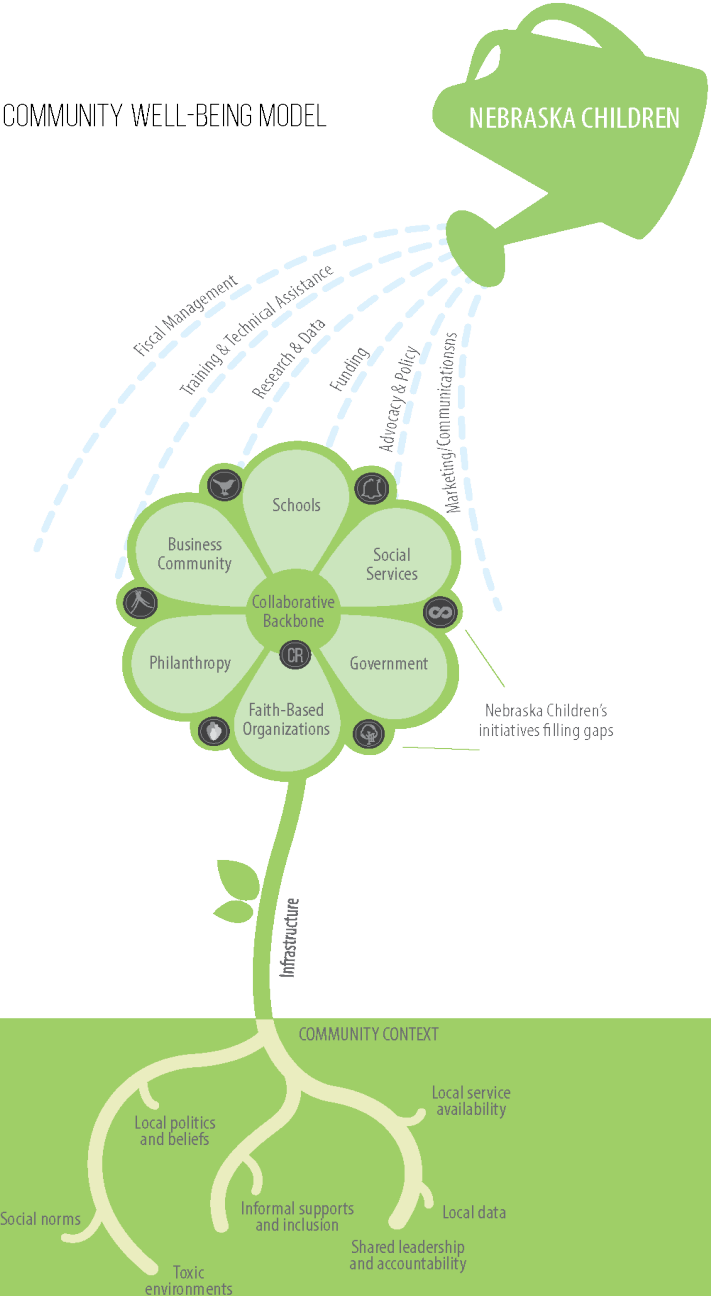
A holistic lifespan approach that provides resources, strategies, and supports for community members of all ages

SYSTEM CHANGE

Incorporation of cross-sector community participants and partners that work together for sustainable system change at the local and state level

Nebraska Children's partnerships in a community-owned prevention system

COMMUNITY WELL-BEING MODEL



History

- December 2006 – Learning Community and Service Array participants identified need for common set of well-being indicators to be utilized at the state and local levels
- April 2007 – Core partners developed a vision to use data to achieve the best outcomes for children and youth along the lifespan (ages 0-26)
- Research was conducted by core partners to determine national and state indicators (what data exists and the quality of said data)
- November 30, 2007 – Over 300 community and state stakeholders identified 12 Key Indicators based on their communication, proxy, data, and action power (Mark Friedman)





Child Well-Being Outcomes

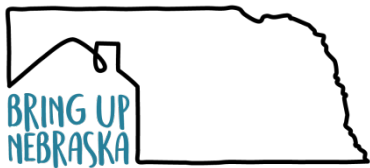
- Children are Healthy
- Children are Safe
- Children are Ready and Successful in School and Beyond
- Children are Supported in Quality Environments

Priority Indicator Selection Criteria

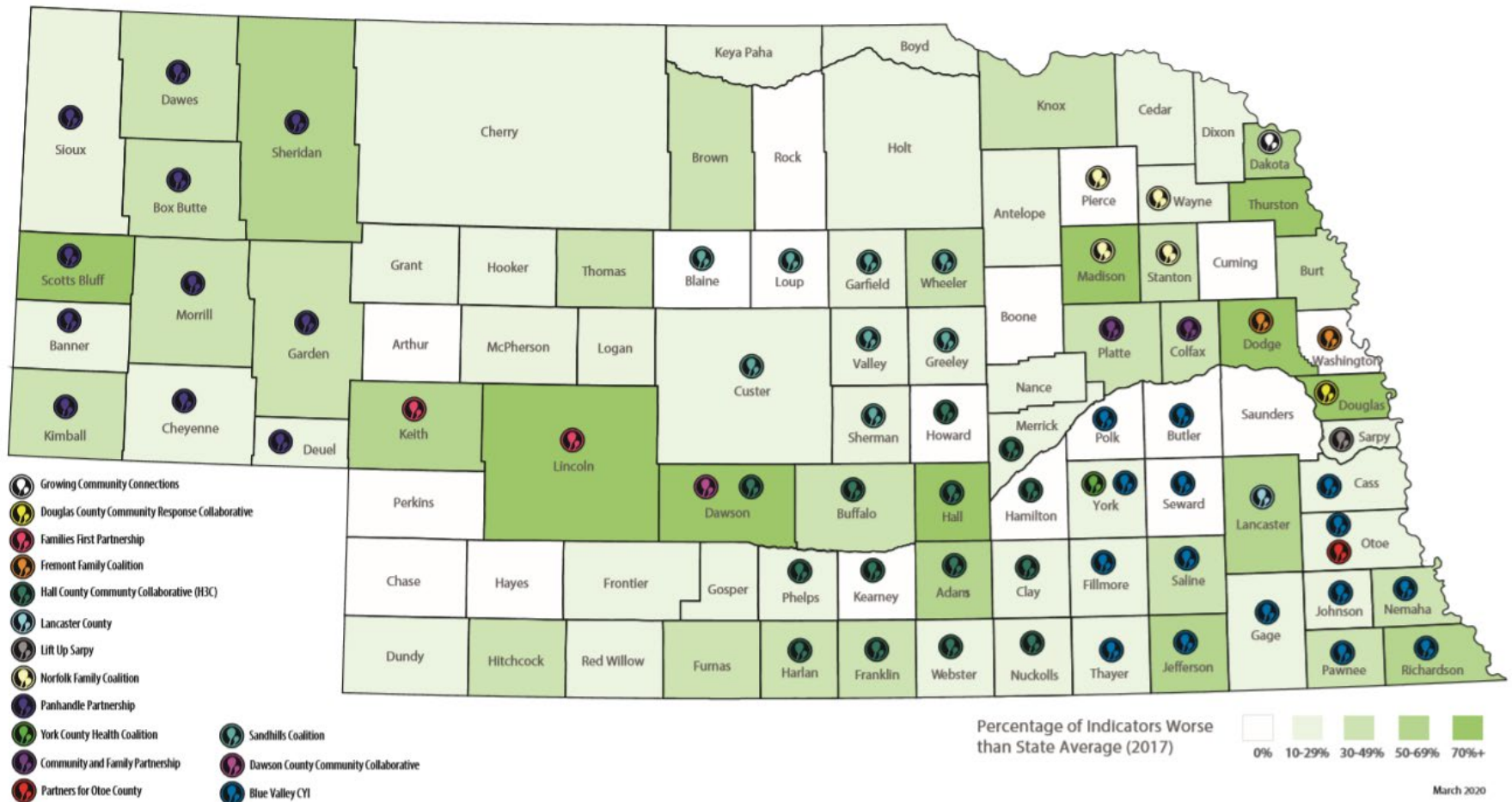
- **Communication Power:** Does it have a common interpretation across domains? Is it understandable to all?
- **Proxy Power:** Does the indicator bring along other measures? Is the link supported by research? Does it matter to Early Childhood (evidence-based link to adolescents and parents)? Is it useful at both the state and community level? What is its tribal, national and global relevance?
- **Data Power:** Does it have established validity and reliability? Can data on the indicator be obtained easily? Is it cost effective?
- **Action Power:** Is it considered significant by the public and policy makers? Does it have a story? Is it viable in today's political climate? Does it lead to action within 5 years?

CWB INDICATORS 2007-2016

- CWB Indicators used to track change in the number and rate of
 - Substantiated cases of child abuse/neglect
 - Children residing in out of home care
 - Juvenile arrests
 - High school graduations
 - Births to Teens
 - Children in poverty
 - Infant deaths
 - Children age 5+ living in a household where the primary language is not English
 - Children in single parent homes
 - Third graders testing proficient in English Language Arts
- 2017 broadened the Child Well-Being focus to Community Well-Being, in alignment with the priorities of Bring up NE and the Community Well-Being Model



Percent of 2017 Community Well-Being Indicators Worse than the State Average, by County



March 2020

This figure presents data on the ten Community Well-Being Indicators that Nebraska Children currently tracks and uses to inform the investments it makes in communities across the state. These indicators are as follows: 1) infant death rates, 2) teen birth rates, 3) juvenile arrest rates, 4) child abuse and neglect rates (substantiated cases), 5) foster care rates, 6) high school graduation rates, 7) the percentage of individuals age 5 plus who live in a household where the language spoken at home is one other than English, 8) the percent of the population who reported incomes that place them below the poverty line, 9) the percent of children in single-parent households, 10) the percent of third grade children who tested proficient in English Language Arts.

Note that indicator data for all 10 indicators is not available for all counties, especially those counties with smaller populations. As a result, the percentages above reflect the number of indicators worse than the state average divided by the number of indicators for which data was available in a given county. For example, because infant death rates are only calculated when there are 5 or more such events—since rates calculated with fewer than five events are considered to be unstable—such rates are not calculated for any county with 1-4 infant deaths over the course of calendar year 2017. In such cases, the percentage presented above is based on a denominator of 9 rather than 10 indicators.



Easily Accessible

This free tool is available to the public with the goal of increasing access to information relevant to the well-being of Nebraska's children and families.



High-quality Data

Data represented on the map is comprised of select U.S. Census Bureau indicators, as well as indicators compiled from Nebraska state agencies.



Highlights Opportunities

The map illustrates locations (counties, state administrative regions, county and district court regions) where families/children are at risk, but also the issues with which they struggle



Guiding Decisions

The map gives policymakers and other stakeholders another tool for making data-informed decisions about resource allocation, service delivery, emergency planning, and other policies that affect families.

About the Community Opportunity Map



A free tool putting
vital community data
at your fingertips
– to ensure informed decisions for
Nebraska’s families.

Community Opportunity Map

Local Data on Community Health to Support Safe Children and Strong Families



CHOOSE A LOCATION

Counties

Zip Code

Explore Another State

Select a Custom Area

circle

rectangle

freeform

CHANGE MAP VIEW

Add a Demographic Layer

Population

Poverty Rate

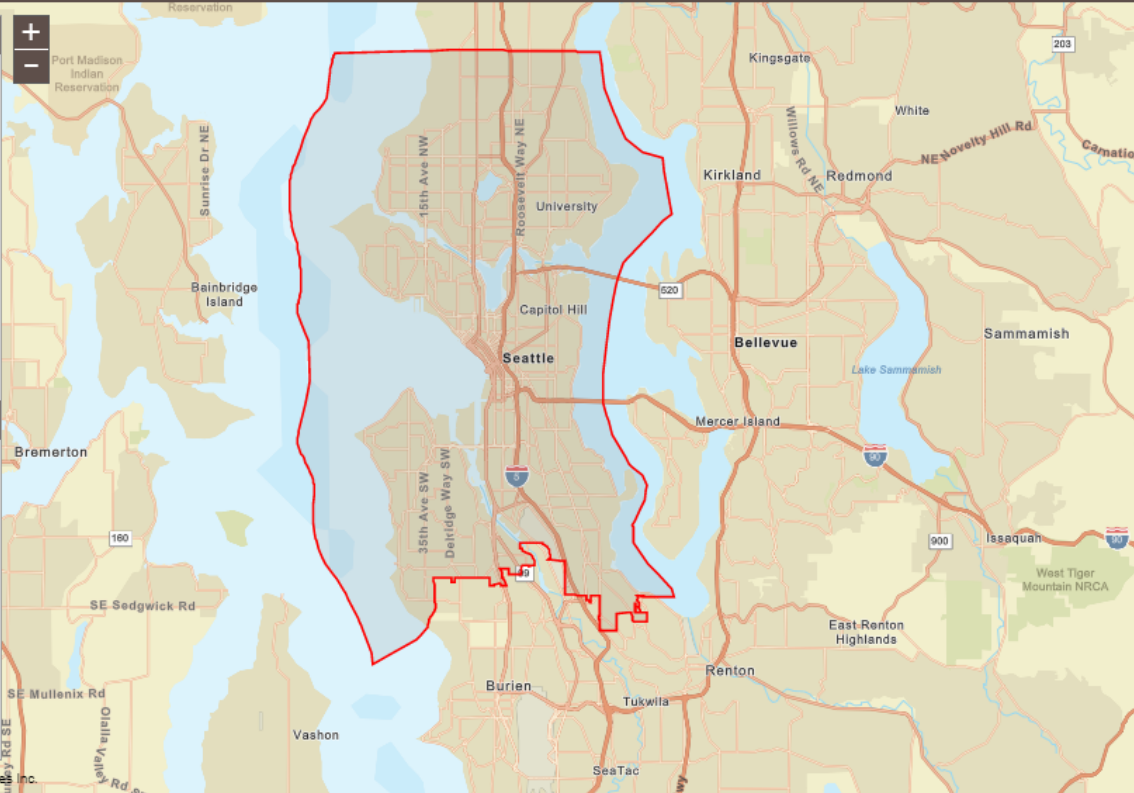
Educational Attainment

Street Map

Satellite

Reset Map

Please tell us how you are using the Community Opportunity Map



Seattle, Washington

Healthy Community Indicators

Hover over an indicator to compare state/national values

Housing Characteristics

Vacant Housing

6%

Within 478 Selected Block Groups

Housing Cost Burden

35%

Within 478 Selected Block Groups

Resident Turnover

23%

Within 133 Selected Tracts

Children and Adults

Single Mother Families

7%

Within 478 Selected Block Groups

Child to Adult Ratio

5:26

Within 478 Selected Block Groups

People 65 and Over

12%

Within 478 Selected Block Groups

Education and Economic Indicators

Unemployment Rate

5%

Within 478 Selected Block Groups

Adults With HS Diploma/GED

94%

Within 478 Selected Block Groups

Poverty Rate

13%

Within 478 Selected Block Groups

Demographic Characteristics

Racial/Ethnic Heterogeneity

Healthy Community Indicators/ Demographic Characteristics - ACS

- Vacant Housing
- Housing Cost Burden
- Resident Turnover
- Single Mother Families
- Child to Adult Ratio
- People 65 and Over
- Unemployment Rate
- Adults with High School Diploma/GED
- Poverty Rate
- Population
- Racial/Ethnic Heterogeneity



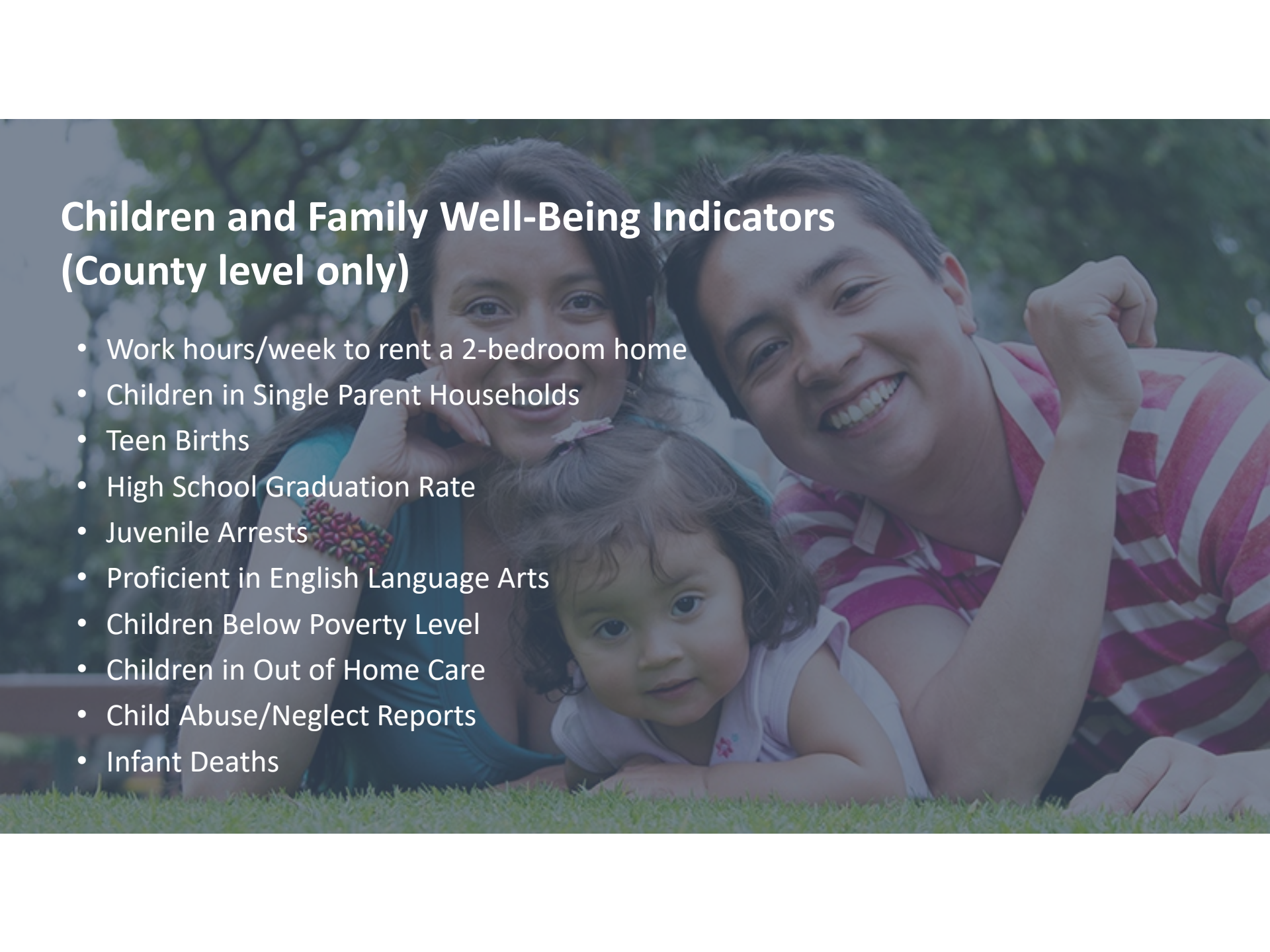
PARTNERS



- Community Attributes, Inc.
- Casey Family Programs

Nebraska stakeholders:

- Boys Town
- Nebraska Department of Health and Human Services
- Foster Care Review Office
- Nebraska Children and Families Foundation
- Nebraska Commission on Law Enforcement and Criminal Justice
- Nebraska Court Improvement Project
- Nebraska Department of Education
- Schmeeckle Research (Consultant/Facilitator)
- University of Nebraska at Omaha, Center for Public Affairs Research
- Voices for Children

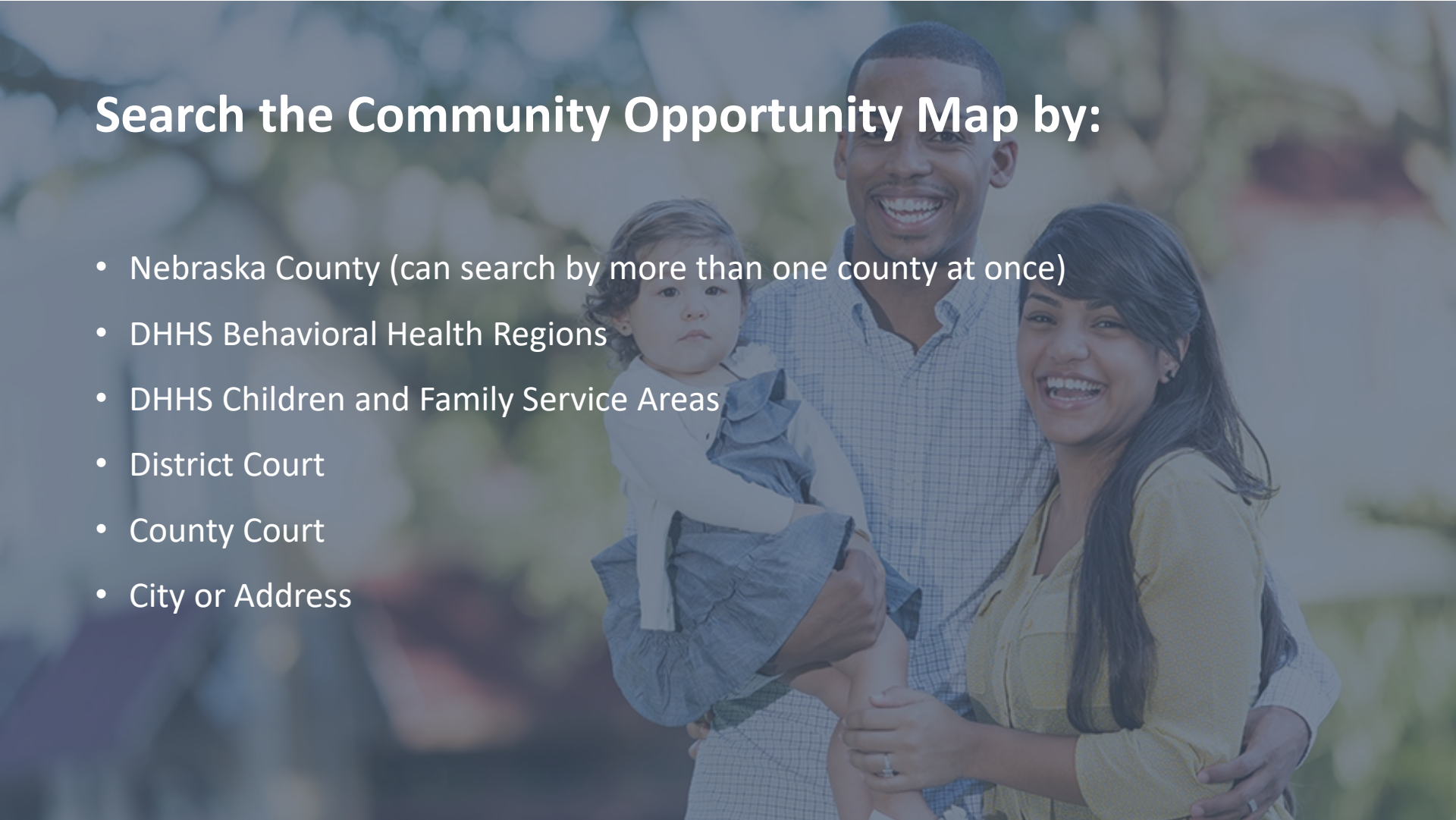


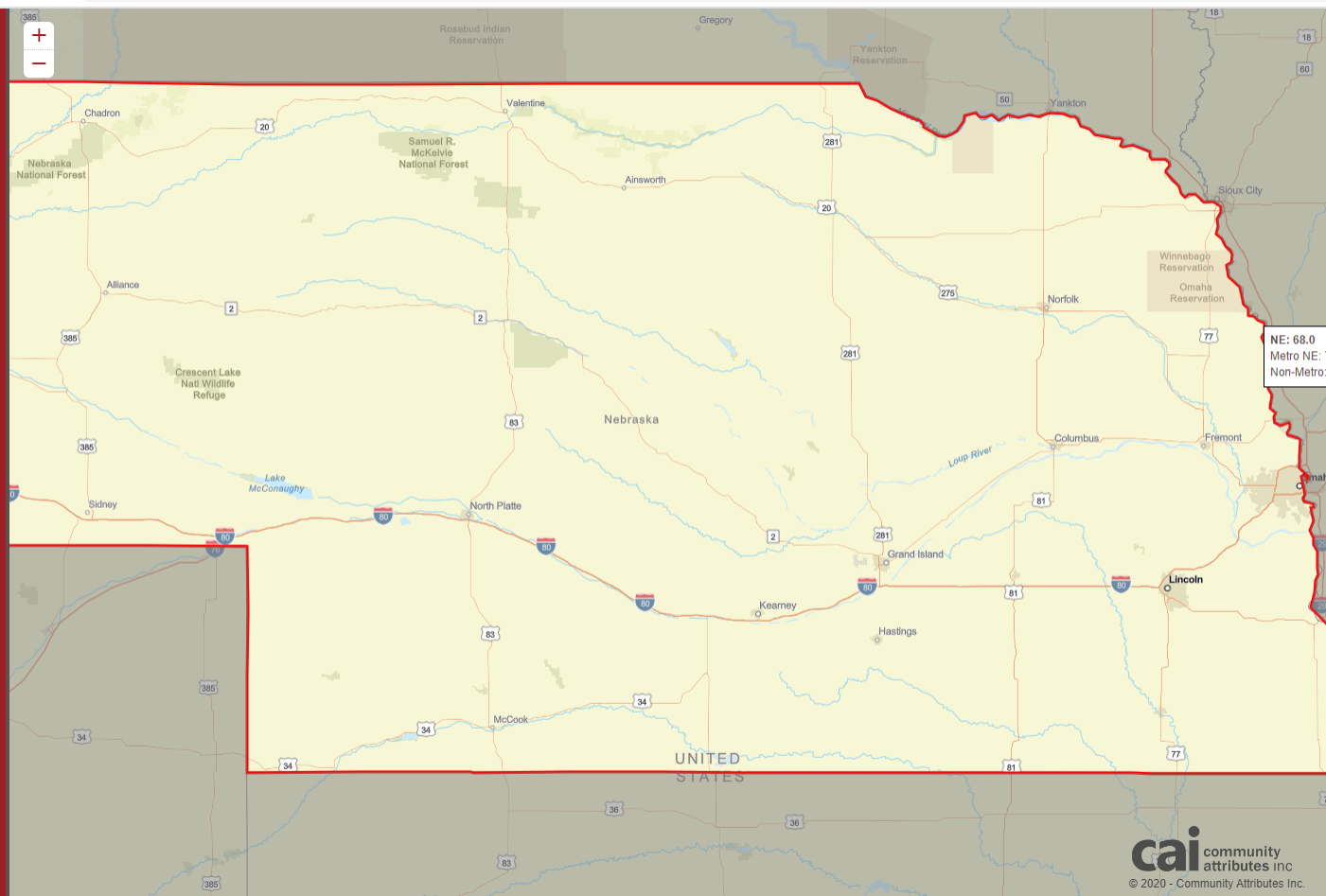
Children and Family Well-Being Indicators (County level only)

- Work hours/week to rent a 2-bedroom home
- Children in Single Parent Households
- Teen Births
- High School Graduation Rate
- Juvenile Arrests
- Proficient in English Language Arts
- Children Below Poverty Level
- Children in Out of Home Care
- Child Abuse/Neglect Reports
- Infant Deaths

Search the Community Opportunity Map by:

- Nebraska County (can search by more than one county at once)
- DHHS Behavioral Health Regions
- DHHS Children and Family Service Areas
- District Court
- County Court
- City or Address





Nebraska

Select Category to View Data

Children & Families Data

Other Community Data

Totals within 93 Counties

Hover over an indicator to compare state, metropolitan, and non-metropolitan values. Sample sizes are provided for context. All data below are 2017 by county.

Children and Family Well-Being

<p>Work Hrs/Week to Rent 2-Bed Home at Minimum Wage</p> <p>68.0</p>	<p>Children in Single Parent Households</p> <p>26%</p> <p>113,168 Children</p>	<p>Teen Births</p> <p>18.2</p> <p>1,167 Births</p>
<p>High School Graduation Rate</p> <p>89%</p> <p>17,760 Graduates</p>	<p>Juvenile Arrests</p> <p>47.0</p> <p>9,860 Arrests</p>	
<p>Proficient English Language Arts</p> <p>53%</p> <p>Third Graders</p> <p>12,855 Students</p>	<p>Children Below Poverty Level</p> <p>23%</p> <p>Under Age 5</p> <p>24,915 Children</p>	
<p>Children in Out of Home Care</p> <p>9.6</p> <p>4,830 Children</p>	<p>Child Abuse / Neglect Reports</p> <p>4.3</p> <p>2,163 Reports</p>	
		<p>Infant Deaths</p> <p>5.6</p> <p>144 Deaths</p>

Nebraska Community Opportunity Map

Local Data on Community Well-Being to Support Strong Families and Safe Children



CHOOSE A LOCATION

- Counties
- DHHS Behavioral Health Regions
- DHHS Children and Family Service Areas
- District Courts
- County Courts

Select a Custom Area

circle

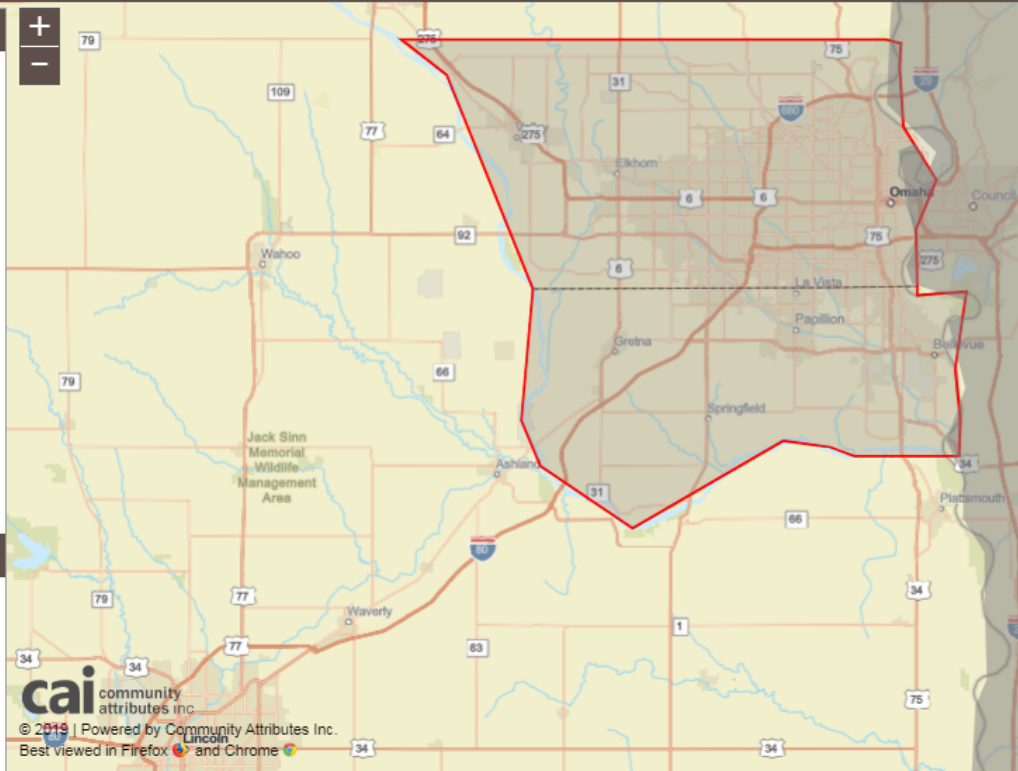
rectangle

freeform

CHANGE MAP VIEW

Add a Demographic Layer

- Population
- Poverty Rate
- Educational Attainment



WITHIN SELECTED AREA

Children & Families Data | Other Community Data

Totals within 2 Counties

Hover over an indicator to compare state, metropolitan, and non-metropolitan values. Sample sizes are provided for context. All data below are 2017 by county.

Children and Family Well-Being

 Work Hrs/Week to Rent 2-Bed Home at Minimum Wage 76.4	 Children in Single Parent Households 28% 48,572 Children	 Teen Births Per 1,000 18.2 444 Births
 High School Graduation Rate 88% 7,465 Graduates	 Juvenile Arrests Per 1,000 48.3 4,057 Arrests	

53%

21%

Nebraska Community Opportunity Map

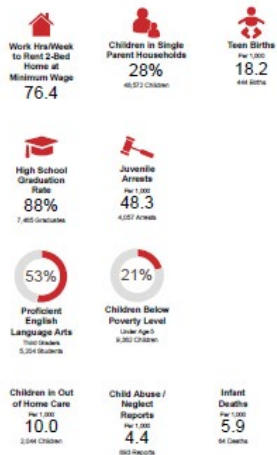
Local Data on Community Well-Being to Support Strong Families and Safe Children

SELECTED AREA: WITHIN SELECTED AREA

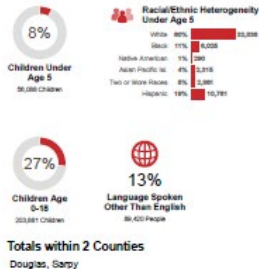
<https://data.caseyfamilynebraska.com/?county=Garpey&state=Nebraska&lat=Nebraska>



Children and Family Well-Being



Demographic Characteristics

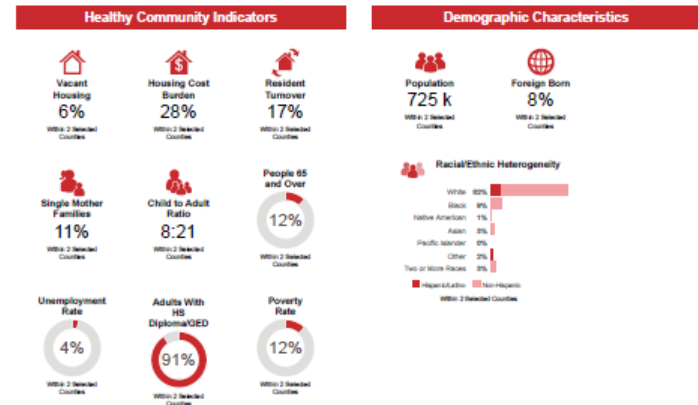


Nebraska Community Opportunity Map

Local Data on Community Well-Being to Support Strong Families and Safe Children

SELECTED AREA: WITHIN SELECTED AREA

<https://data.caseyfamilynebraska.com/?county=Garpey&state=Nebraska&lat=Nebraska>



This map provides information relevant to the well-being of children and families throughout Nebraska. It is designed to empower people working in and with communities across the state by providing easily accessible, timely, relevant, and high-quality data. The Nebraska Community Opportunity Map is governed by a multi-organizational steering committee that welcomes your feedback about the map and how to improve it.

To expand your search beyond Nebraska and understand the aspects of communities that are associated with safe children and strong families, see the Community Opportunity Map, launched by Casey Family Programs in 2018. This Community Opportunity Map is an interactive tool that highlights the aspects of communities that are associated with safe children and strong families.

Data sources for the map indicators include the American Community Survey, Nebraska DHHS and DHHC, Nebraska Department of Education, NE Crime Commission, NCADS, FCRO, CPAR and the National Low Income Housing Coalition. For more details see the detailed documentation link in the map.

X22									
	A	Q	R	S	T	U	V	W	
	Geography	Juvenile Arrests, per 1,000 Youth	Count of Juvenile Arrests	Total Population, Age 10 - 17	Child Abuse / Neglect Rate, per 1,000 Children	Count of Child Abuse / Neglect Reports	Out of Home Care Rate, per 1,000 Children	Count of Court Involved Children in Out of Home Care	
1									
2	Nebraska	47	9,860	209,987	4.3	2,163	9.6	4,830	
3	Custom Area	48	4,057	84,066	4.4	893	10.0	2,044	
4	Counties Included in Selection								
5	Douglas	45	2,799	61,760	4.9	740	12.1	1,837	
6	Sarpy	56	1,258	22,306	2.9	153	4.0	207	
7									
8									
9									
10									
11									
12									
13									
14									
15									
16									
17									
18									
19									
20									
21									
22									

Children & Families Data

READY

110%

Data Dictionary

for the Nebraska Community Opportunity Map

A free tool putting vital community data at your fingertips
– to ensure informed decisions for Nebraska's families.



WHAT INFORMATION IS INCLUDED IN THE DATA DICTIONARY?

The Data Dictionary of the Nebraska Community Opportunity Map provides the following information for each data point listed as part of the Nebraska Community Opportunity Map:

- Detailed Indicator definition
- General and specific source information
- Data type (e.g. rate per 1,000)
- Age range
- Specific numerator used to calculate the rate
- Specific denominator used to calculate the rate
- Timeframe
- Data suppression information, if relevant



HOW IS THE DATA DICTIONARY ORGANIZED?

The Data Dictionary is organized in alphabetical order, by Indicator title.

The Nebraska Community Opportunity Map is brought to you by Community Attributes, Inc., Casey Family Programs, and these stakeholders: Boys Town | Nebraska Department of Health and Human Services | Foster Care Review Office | Nebraska Children and Families Foundation | Nebraska Commission on Law Enforcement and Criminal Justice | Nebraska Court Improvement Project | Nebraska Department of Education | Schmiedeknecht Research (Consultant/Facilitator) | University of Nebraska, Center for Public Affairs Research | Voices for Children



Child Abuse and Neglect Reports

Definition: Child abuse and neglect substantiated reports are a subset of the total number of reports of child maltreatment that were made in a given year. "Substantiated" means that a determination was made that the incident of maltreatment did occur. "Child maltreatment" is defined by the Nebraska Department of Health and Human Services as physical, emotional, or sexual harm done to a child 18 and under. This harm may occur either through abuse or neglect. The child abuse and neglect substantiated report rate is the number of such reports per 1,000 individuals age 18 and under in a given county.

Source: Nebraska Department of Health and Human Services, Division of Children and Families

2017

Source for substantiated reports data: Nebraska Department of Health and Human Services, Division of Children and Families, Child Abuse and Neglect (CAN) data report, 2017. Retrieved from <http://dhs.ne.gov/Pages/reports-and-statistics.aspx>. Source for population data: U.S. Census Bureau, (Annual). Vintage Population Estimates from the U.S. Census Bureau, 2017, PEPAGESEX. Data compiled and analyzed by the Center for Public Affairs Research (CPAR) at the University of Nebraska at Omaha.

Type of Data	Age range	Numerator	Denominator	Timeframe	Data suppression
Rate per 1,000	18 and under	Number of reports substantiated	Number of individuals 18 and under	Calendar year (Jan.-Dec.)	No data suppression



Children Under Age 5

Definition: An estimate of children 4 and under as a percentage of the total population.

Source: U.S. Census Bureau

2017

U.S. Census Bureau, (Annual). Vintage Population Estimates from the U.S. Census Bureau, 2017, PEPAGESEX. Data compiled and analyzed by the Center for Public Affairs Research (CPAR) at the University of Nebraska at Omaha

Type of Data	Age range	Numerator	Denominator	Timeframe
Percentage	4 and under	Number of children age 4 and under	Total population	Five-year period up to and including the given year (e.g., 2017 includes 2013-2017)

Map Moving Forward

- Add Nebraska state legislative districts
- Create framework for multi-year updates and data display
- Enhance map interface to show change in metrics over time

Additional Community Indicator Maps

Map	About
Community Opportunity Map <i>Casey Family Programs</i>	<ul style="list-style-type: none">• Selected U.S. Census Bureau indicators• Available for any community in the nation• Informed by significant evidence of the community factors correlated with child maltreatment and a healthy community framework developed by the U.S. Department of Housing and Urban Development.
Opportunity Index <i>Forum for Youth Investment</i>	<ul style="list-style-type: none">• Snapshot of conditions that can be used to identify and improve access to opportunity—in comprehensive terms—for residents and their communities.• 50 states plus the District of Columbia and 2,065 counties
Opportunity Atlas <i>Raj Chetty/Opportunity Insights</i>	<ul style="list-style-type: none">• Estimates show the average outcomes in adulthood of people who grew up in each Census tract and were born between 1978 and 1983• Maps the data by where children grew up
National Equity Atlas <i>Policy Link</i>	<ul style="list-style-type: none">• Data on demographic change, racial inclusion, and the economic benefits of equity• 100 largest cities, 150 largest regions, all 50 states, and the United States.

Using the Community Opportunity Map

- Bring Up NE partners using shared data across the state
- Community strategic planning processes and toolkit
- Expansion of Community Well-Being and Community Response investments
- Communities updating and reviewing community-wide priority plans
- Fun Facts
 - Average of 230 users per month, July-December 2019
 - 65% of all users July-December 2019 were Nebraskans
 - Have logged users from Seattle to New York to Hawaii



Group Conversation

- What have you found to be successful in not only making people aware of tools like this one, but also supporting behavioral change around the use of data in the prevention work?
- What strategies have you found in taking an asset-based approach to data collection, analysis, and/or use?
- As we move this work forward, what should we consider? Do you see something we're missing?

Group Conversation

Using your own local indicators, apply the Indicator Selection Criteria

- **Communication Power:** Does it have a common interpretation across domains? Is it understandable to all?
- **Proxy Power:** Does the indicator bring along other measures? Is the link supported by research? Does it matter to Early Childhood (evidence-based link to adolescents and parents)? Is it useful at both the state and community level? What is its tribal, national and global relevance?
- **Data Power:** Does it have established validity and reliability? Can data on the indicator be obtained easily? Is it cost effective?
- **Action Power:** Is it considered significant by the public and policy makers? Does it have a story? Is it viable in today's political climate? Does it lead to action within 5 years?

RBA Framework Worksheet

- Test out the criteria by selecting three of your own indicators
- Complete the worksheet with H M L ratings
- Share your findings with your neighbors